

FY 2023/2024



# ANNUAL REPORT

SYDNEY BREAST CANCER FOUNDATION

# CONTENTS

|                                   |    |
|-----------------------------------|----|
| Meet the team                     | 03 |
| A word from our Chair             | 04 |
| Our mission                       | 05 |
| What we have achieved this year   | 06 |
| Our impact                        |    |
| The SBCF Fellowship Program       | 07 |
| The Chris O'Brien Lifehouse Nurse | 08 |
| The Living Room                   | 09 |
| Donated Equipment                 | 10 |
| Patients Support                  |    |
| Compassionate Fund Program        | 11 |
| Exercise Bands and Essity Sleeves | 12 |
| Awareness                         |    |
| Shower Cards                      | 13 |
| Communication                     | 14 |
| How we achieved all this          |    |
| Ladies Long Lunch                 | 15 |
| Rugby Long Lunch                  | 16 |
| Waratahs Partnership              | 17 |
| Schools, Corporate and Community  | 18 |
| Sponsorships                      | 19 |
| What we have achieved in 29 yrs   | 20 |
| Coming up in FY2024/2025          | 21 |
| Financials for FY2023/2024        | 22 |

# MEET THE TEAM

2023/2024

## BOARD MEMBERS

*"I just wanted to take this opportunity to say thank you very much to the Sydney Breast Cancer Foundation for the complimentary massage service they provide for cancer patients, which I am a beneficiary of as I am currently diagnosed with stage 3 aggressive breast cancer and currently receiving treatment at the Chris O'Brien Lifehouse." - Patient*



*Chair*

Lynne Crookes,  
OAM



*Director*

Catherine West



*Director*

Renae Lopez



*Director*

Deborah West



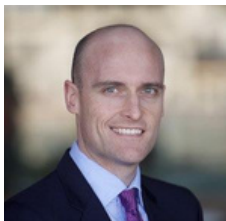
*Director*

Laura Durkan



*Director*

Miriam Stiel



*Treasurer*

Simon Murray



*Director*

Lucy Vecchio

## SUB-COMMITTEES

### *Medical Advisory Committee*

- Ass Prof Richard West AM - Chair
- Ass Prof Sanjay Warrier
- Ass Prof Cindy Mak
- Ass Prof Jane Beith
- Dr Kylie Snook
- Wendy Vincent

### *Risk And Finance Committee*

- Simon Murray - Chair
- Catherine West
- Miriam Stiel
- Renae Lopez

### *Events Committee*

- Deborah West - Co - Chair
- Renae Lopez - Co - Chair
- Lucy Vecchio
- Anne West

## STAFF

### *Foundation Manager*

- Annie Zukerman

### *Event Manager*

- Jo Stiel

### *Accounts Manager*

- Lulie Murray

### *Social Media Manager*

- Lily Avery

## AMBASSADORS



*Angela Bishop OAM*



*Jessica Rowe AM*



# A WORD FROM THE CHAIR



2023/2024 has been another pivotal year for Sydney Breast Cancer Foundation (SBCF), marking our second financial year as an independent charity. We have continued to grow, expand our reach, and strengthen our support for breast cancer patients and their families.

Thanks to the generosity of our community and supporters, our key fundraising events have been more successful than ever:

- Mosman Rugby Ladies Day – Raised \$15,000
- Ladies Lunch – Raised \$338,000
- Waratahs Women Pink Laces & Men's Pink Jersey – Raised \$17,639
- ATC Chandon Lunch – Raised \$30,000
- Rugby Long Lunch – Raised \$300,000

Each of these events has played a critical role in helping us fund vital services and programs. We extend our heartfelt gratitude to everyone who attended, donated, and volunteered.

Spreading awareness remains at the heart of what we do. Our initiatives this year included:

- Continuing our school's program, where speakers educate students about breast cancer awareness and early detection.
- Strengthening our sponsorship of the Waratahs W and women's rugby in New South Wales. As they proudly wear our logo on their jerseys, they also inspire young girls to engage in sport while promoting breast cancer awareness.
- The Waratahs W and men's teams further supported our cause by wearing pink boot laces and jerseys during a dedicated awareness match.
- Mosman Rugby Club, Mosman Junior Rugby Club, and Shore School continued their tradition of pink socks rounds, increasing awareness among boys and men while raising funds for SBCF.

I want to extend my gratitude to the incredible medical professionals who work tirelessly to support breast cancer patients, including Surgeons Cindy Mak and Sanjay Warriar, and Medical Oncologist Jane Beith at Lifehouse, as well as breast surgeons across all hospitals. We are thrilled to welcome Wendy Vincent and Dr. Kylie Snook to the Medical Advisory Committee (MAC), bringing with them a wealth of expertise and passion for our cause.

We bid farewell and thank Catherine West for her valuable contributions as she finishes on the Board at the end of this financial year.

Special thanks to all our dedicated volunteers, including the Defence Force personnel, who have generously given their time at our Ladies' Lunch for many years. Your efforts make our events possible and our mission stronger. We are also proud to announce our new partnership with the Australian Turf Club (ATC), which will help us further expand our reach and impact.

Finally, I would like to express my deepest appreciation to our incredible sponsors and my hardworking fellow Board members – all of whom juggle full-time careers and family responsibilities while dedicating their time to SBCF. Special thanks to our Foundation Manager Annie Zukerman, Events Manager Jo Stiel, Social Media Co-ordinator Lily Avery as well as Lulie Murray who volunteers her time to help with our accounts and book-keeping, whose dedication and passion have been instrumental in our success.

I look forward to seeing you at our upcoming events. If you are interested in volunteering or supporting SBCF in any way, please reach out to Annie at [hello@sbcf.org.au](mailto:hello@sbcf.org.au).

**LYNNE CROOKES, OAM,**  
**CHAIR**





# OUR MISSION

BEATING BREAST CANCER TOGETHER

---

Sydney Breast Cancer Foundation is dedicated to raising awareness and funds in support of women and men with breast cancer.

Established in 1995, by a group of passionate doctors, surgeons, and advocates committed to supporting breast cancer patients by raising much-needed funds in support of research, treatment, and care including for breast care units.



## AWARENESS

Educate the community and encourage proactive self-examination



## RESEARCH

Funding research including genomic research and fellowships



## SUPPORT

Help families through information, funding nurses and a hardship fund



## TREATMENT

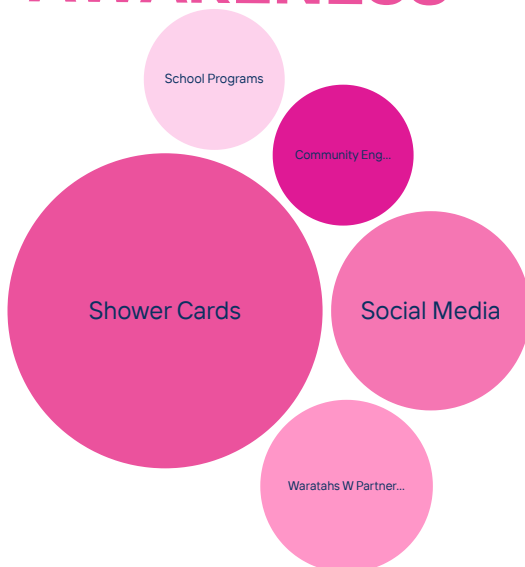
Provide funding to breast care units across New South Wales



# WHAT WE DO AT THE FOUNDATION

The Sydney Breast Cancer Foundation's mission is to improve the early detection of breast cancer and the quality of life and survival rates of breast cancer patients.

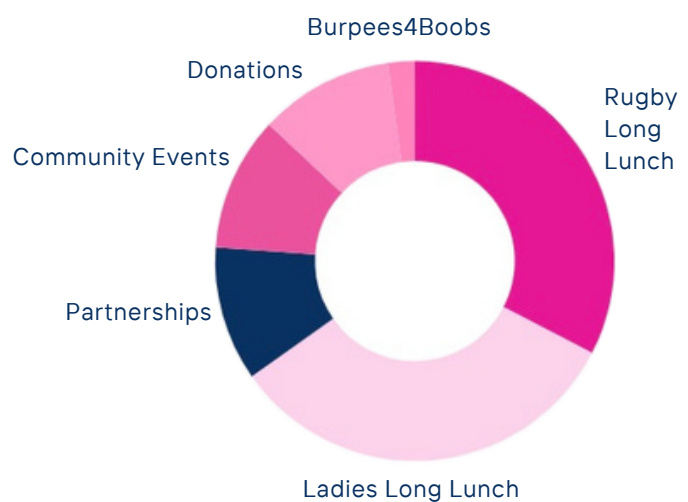
## AWARENESS



Raise breast cancer awareness through distributing self-exam cards, promoting checks in the community, educating women and men on the importance of early detection.



## FUNDRAISING



The Sydney Breast Cancer Foundation is committed to raising funds for patients facing their breast cancer journey.



# THE SBCF FELLOWSHIP PROGRAM AT CHRIS O'BRIEN LIFEHOUSE



We are very proud to continue to support the SBCF Fellowship Program at Chris O'Brien LifeHouse supporting a Surgical Fellow. This years program allows the Fellows to gain experience in a number of different types of procedures including rotational flaps for breast conserving surgery, non wired based localisation of breast lesions and importantly different techniques for implant based reconstruction.

*"My experience at Chris O'Brien Lifehouse has been both enriching and fulfilling, contributing significantly to my growth as a BreastSurgANZ Fellow and enhancing my ability to deliver comprehensive care to patients.*

*The high-volume, complex surgical practice at Chris O'Brien Lifehouse has allowed me to refine advanced breast oncology and oncoplastic techniques.*

*Additionally, the opportunity to lead and participate in impactful research projects has been a highlight of my tenure. Presenting findings at national and international platforms underscores Chris O'Brien Lifehouse's commitment to innovation and excellence in breast cancer care.*

*For the breast team, my contributions extend to enhancing surgical practices, mentoring junior staff, and sharing insights from my experiences at other leading institutions. For patients, I believe my focus on tailored surgical management and commitment to compassionate care make a tangible difference in their journey.*

*Overall, the experience has been invaluable, aligning seamlessly with my passion for advancing breast surgery and delivering exemplary patient care."*

*- Dr Jasmina Kevric - current SBCF Fellow at Lifehouse*





# THE CHRIS O'BRIEN LIFEHOUSE BREAST CARE NURSE



It is a privilege to continue our support of the Breast Care Nurse at Lifehouse. We have funded breast care nurses for many years as we know how important their role is in a patient's breast cancer journey.

Breast care nurses provide crucial support for patients by way of:

- Coordinating care and treatment.
- Address concerns as a primary and continual point of contact and reference.
- Managing side effects and post-operative care plans.

Helena Lee is a clinical Nurse Specialist with the Lifehouse breast team and proudly funded by the Sydney Breast Cancer Foundation.

## A patients highlight

*A highlight of the past year is that I had the privilege of supporting a 104-year-old lady preparing for a mastectomy. I have been there to look after this lady from the very first consultation.*

*There was a surgeon, the patient, me and her four children in the room, all focused on how to make the procedure work. Other medical and support staff - the anaesthetist, theatre staff, ward nurses, physiotherapist and the patient's carer were all involved in bringing about a successful operation and recovery.*

*It was delightful to see her return to my clinic for follow up with the same smile she gave me when I first met her.*

*I am inspired by my patients every day. Each patient has a story and a voice, and as an advocate, I am there to listen and help navigate their cancer journey in 'Beating Breast Cancer Together.'*

*- Helena Lee, Breast Care Nurse*



# THE LIVING ROOM

**TOTAL SBCF FUNDED TREATMENTS: NEARLY 500 YEARLY**

The Living Room is the home of supportive care and integrative medicine at Chris O'Brien Lifehouse. The Living Room gives patients at Lifehouse the chance to have the best quality of life while living with cancer. The Lifehouse cares for the whole person and considers their physical, psychological and social well-being as a crucial part of treatment. Sydney Breast Cancer Foundation has proudly funded treatments at the Living Room for many years.



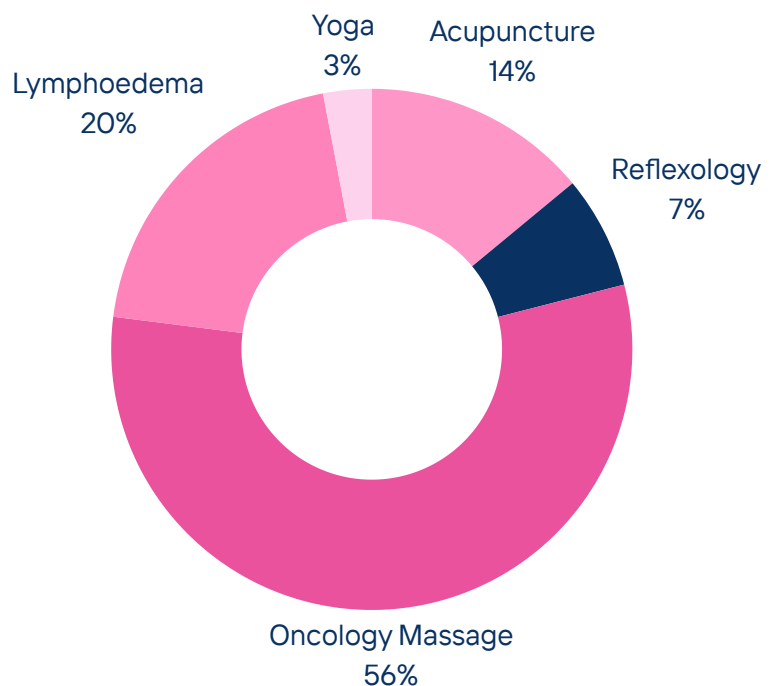
## PATIENTS EXPERIENCES

*"I was 'hitting the deck' and oncology massage helped me to get through my radiation"*

*"During radiation treatment, I had a strong emotional reaction and suddenly experienced a high level of stress and really needed the massage. This really helped to 'calm the farm'."*

*"Massage helped me to move forward out of a highly emotional state which was unusual for me"*

## AVERAGE TREATMENTS PER QTR



# DONATED EQUIPMENT

As an independent charity, the Sydney Breast Cancer Foundation is dedicated to raising funds for essential equipment in breast care units and hospitals across NSW. Understanding the vital role this equipment plays in improving patient outcomes and supporting doctors motivates us to continue our work and raise even more funds.

*“Having a specimen Xray machine in the operating theatre benefits patients by shorter operating times (associated with better outcomes), and reduced need for second surgeries (often delayed by a few weeks) to clear margins. Reducing the time for surgery means we can look after more patients on the same operating list, where theatre time is already at a premium, and reduced costs for the hospital and the system in general by reducing the need for manual handling of specimens and also reduced costs of surgical procedures. .” - Dr Kylie Snook*

## TRIDENT X-RAY MACHINE



HORNSBY HOSPITAL

## ICE GLOVES



MATER HOSPITAL



# COMPASSIONATE CARE PROGRAM

## PARTNERING WITH CAN ASSIST

The Sydney Breast Cancer Foundation continues to partner with Can Assist to provide financial support to breast cancer patients in regional and rural NSW.



| Location        | Contribution             | Amount | Individual Comments  |
|-----------------|--------------------------|--------|--|
| Scone           | Energy Bill contribution | \$850  | 30-year-old<br>"Thank you so much that is a great help, I really appreciate it"  |
| Dondingalong    | Food and Fuel vouchers   | \$350  | 34-year-old, 2 dependent children. She is currently on reduced income and minimal sick leave. Travel is under the IPTAAS rebate scheme   |
| Tyalgum (Tweed) | Food Voucher             | \$500  | Indigenous, 32-year-old, 4 children under 5 years. Undergoing chemotherapy   |
| Old Bar         | Origin Contribution      | \$500  | 49-year-old, 2 kids, aged 13 and 9. Through Breast Cancer for 2 years, metastasis to skin. Stage 4 and will be on treatment forever.   |
| Cowra           | Food Voucher             | \$300  | 43-year-old, travels from Cowra to Orange health service for 3 weeks of radiotherapy. Despite being short of 100km rule for IPTAAS with our experience we could direct her to IPTAAS rebate scheme to cover fuel and accommodation. She was very anxious about living away from home but again with our experience on lodges she investigated and then agreed to accommodate in Orange during treatment. |
| Eurobodalla     | Food Voucher             | \$200  | Retiree recently returned to live in Australia. Surgery in Canberra.   |
| Barham          | Origin and water Bills   | \$635  | Palliative, 2 children. No further treatment. Still requiring travelling for ascites to be drained. Low-income family- partner is now full-time carer.   |
| Orange          | Medical assistance       | TBD    | Young mum, schoolteacher, treatment at Chris O'Brien and regular trips back and forth. Added expenses taking toll.   |

# COMPASSIONATE CARE PROGRAM

## PTP FITNESS EXERCISE BANDS



Supporting patients through radiation treatment. It's important to keep moving during your treatment to decrease the risk of mobility limitation and tightness. PTP Fitness generously donated these exercise bands.

These bands will assist in:

- improving strength, general mobility, and increasing flexibility throughout your treatment
- To assist you utilising the Thera Bands effectively, we have resources created to support you to do simple and easy exercises at home



## ESSITY - COMPRESSION PRODUCT



### What is the program:

The Hardship Program is a joint philanthropic initiative between the Sydney Breast Cancer Foundation (SBCF) and Essity, to support breast cancer patients experiencing financial hardship with short term access to quality compression therapy.

It is reported that 20% of all breast cancer patients will experience lymphoedema (swelling) of the breast or arm.

With knowledge that many patients do not have the financial means to access compression therapy during their recovery period, the SBCF and Essity have joined forces to support the most vulnerable. The Hardship Program offers medical compression products free of charge to help the probability of access to good care and regaining quality of life.

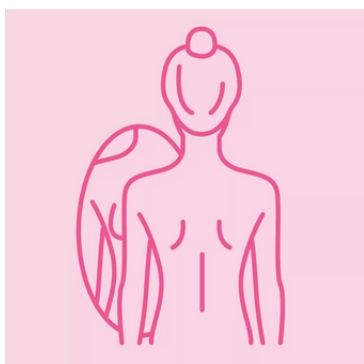


# BREAST CHECK SHOWER CARDS

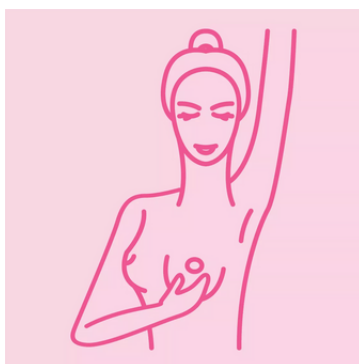
25,000 SHOWER CHECK CARDS DISTRIBUTED ACROSS THE WORLD FOR FREE IN THE PAST 12 MONTHS

Sydney Breast Cancer Foundations mission is to improve the early detection of breast cancer and the quality of life and survival rates of breast cancer patients.

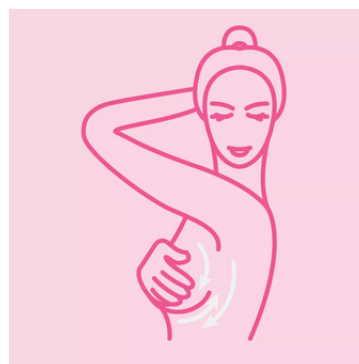
## THE 3 STEP BREAST CHECK



LOOK



LIFT



FEEL

## WHY ARE THEY SO IMPORTANT:

Early detection is the best prevention. Don't leave it until it's too late.

Self-breast examinations can increase the chances of early detection and diagnosis, and results have shown that such early detection leads to an increase in survival rates.

You know your breasts better than anyone else so if you don't already check - now is the time to start.

While mammograms can help you to detect cancer before you can feel a lump, self breast examinations help you to be familiar with how your breasts look and feel so you can alert your healthcare professional if there are any changes.

### 3 STEP BREAST CHECK

A self-breast examination could increase the chances of early detection and diagnosis of breast cancer. Results have shown that early detection and diagnosis leads to an increase in survival rates among breast cancer patients.

- Place your hands at your sides and visually examine your breasts in the mirror, checking for anything which is not normal for your breasts – LOOK for changes in colour, size or shape, any dimpling of the skin or "pulling-in" of the nipple.
- Put your hands on your hips, push your shoulders forward to flex your chest muscles and finally, raise your hands over your head, looking again for any changes with each movement. LIFT one hand up and place it behind your head.
- Using the pads on your fingers of your opposite hand, FEEL in small circular movements and examine all areas of your breast for anything unusual. At first, feel lightly, checking for anything near the surface. Repeat, this time press firmly, feeling for anything deeper. Be consistent and ordered in the direction you check, making sure to check the entire breast, continuing up to your collarbone and out to the armpit.

Beating Breast Cancer Together

### Be Breast Aware

Check your breasts at different times of the month, get to know what your breasts feel like and what your normal is. If you notice a change in your breasts, seek a consultation with your health care professional. Women with a personal or family history of breast cancer may be at higher risk and should seek advice from their GP as soon as possible.

### Did you know?

While all women should check their breasts regularly, self-examination is not a substitute for a yearly breast examination by your GP and screening mammograms every two years. Screening mammograms are available free of charge to every woman in Australia from age 40, by calling BreastScreen in your local state.

### Sydney Breast Cancer Foundation

The Sydney Breast Cancer Foundation is dedicated to promoting the importance of self-breast examinations, as we aim to increase the rates of early detection and improve survival rates of breast cancer patients. Established in 1995 by a group of passionate doctors, surgeons and advocates, Sydney Breast Cancer Foundation raises much-needed funds to improve the care and treatment of patients diagnosed with breast cancer.

### Beating Breast Cancer Together

**Support SBCF**  
Help support SBCF mission and make a donation today, visit [www.sbcf.org.au](http://www.sbcf.org.au)

**Get in touch**  
Send an email to [hello@sbcf.org.au](mailto:hello@sbcf.org.au) or fill out the contact form on [www.sbcf.org.au](http://www.sbcf.org.au)



# COMMUNICATION



In FY23/24 we set ourselves a communications objective to increase our reach and therefore increase our ability to spread our awareness message. Platforms such as Instagram, LinkedIn, Facebook and a dedicated CRM software, allows us to consistently reach our extensive database who in turn help us spread our vital message while raising much needed funds.

| Business objectives           | Social media goals  |
|-------------------------------|---|
| Grow the brand                | <u>Awareness</u> - who we are and what we support                               |
| Turn customers into advocates | <u>Engagement</u> - show how audiences are interacting with our content         |
| Drive leads and donations     | <u>Conversion</u> - to donate/get involved with online events/buy from the shop |
| Improve customer retention    | <u>Consumer</u> - growth in ambassador relationships                            |

| Profile               | Audience | Net Audience Growth | Published Posts | Impressions | Engagement |
|-----------------------|----------|---------------------|-----------------|-------------|------------|
| Reporting FY 23 - 24  | 5,157    | 1,599               | 1,072           | 342,498     | 18,586     |
| Compare to FY 22 - 23 | 3,648    | 767                 | 710             | 34,337      | 15,292     |
| Social Media FY 23-24 |          |                     |                 |             |            |
| Facebook              | 1,642    | 122                 | 283             | 85,980      | 6,897      |
| LinkedIn              | 560      | 194                 | 187             | 26,068      | 2,120      |
| Instagram             | 2,955    | 1,243               | 602             | 230,450     | 9,569      |

# LADIES LONG LUNCH

The 2023 Ladies Lunch sold out in just six days—an incredible achievement, especially after moving to the Winx Stand at the Australian Turf Club to accommodate more guests. What we expected to be a slight increase quickly grew to 1000 attendees in record time. Once again, the wonderful Jessica Rowe AM and Angela Bishop OAM kept the audience engaged and entertained throughout the event.

**1000+**  
GUESTS

**\$338K**  
FUNDRAISED

**130**  
PRIZES DONATED  
(INCLUDING DIAMOND  
BRACELET)



Twelve incredibly brave women, dressed by some of Australia's most iconic fashion brands, shared their deeply personal breast cancer journeys in the lead-up to the Ladies Lunch. In a powerful and emotional finale, all twelve women proudly walked the catwalk, marking the most unforgettable moment of our biggest Ladies Lunch in SBCF history.



# RUGBY LONG LUNCH

The 19th Annual Rugby Long Lunch was another huge success with Vince Sorrenti entertaining a crowd of more than 600 guests. We heard the inspiring story from Virginia Brookes who shared her breast cancer journey with us. What an amazing day thanks to our corporate partners, prize donors and incredibly supportive and generous guests.

**650**  
GUESTS

**OVER  
\$300K**  
FUNDRAISED

**150**  
PRIZES DONATED  
(INCLUDING AUDI CAR)



The 2024 Rugby Long Lunch raised vital funds to continue supporting the Sydney Breast Cancer Foundation Fellowship Program in Surgical, Medical Oncology, and Pathology at Chris O'Brien Lifehouse. This program trains and mentors breast cancer specialists at the highest level, equipping them with advanced proficiency, knowledge, and skills in breast cancer treatment. Additionally, funds raised contributed to our Compassionate Care Fund, which provides financial assistance to individuals battling breast cancer and facing acute financial hardship. Thank you to everyone involved in making the 19th Rugby Long Lunch another tremendous success.

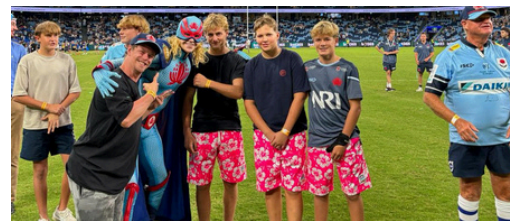


# WARATAHS W PARTNERSHIP

We were proud to sponsor the Waratahs Women once again in 2024. This team continues to grow stronger each year, along with their dedicated fan base. Their passionate supporters help us reach a whole new audience of women and men, allowing us to spread awareness about the importance of early detection and breast cancer education.

**\$17,600**  
FUNDRAISED

With the incredible support of their major sponsor NRI, the Waratahs men's team wore a pink jersey in support of the Foundation during the Rugby for Good round in March. Generously, they donated their jerseys back to be auctioned, raising an incredible \$17,639. With a nearly sold-out crowd, this match helped us reach a new audience with our important awareness message.





# SCHOOLS, CORPORATE AND COMMUNITY

---



## BURPEES4BOOBS

We continued to be committed to encouraging our community to stay healthy and get active with BURPEES. This campaign allows us to engage with more individuals and reinforce the importance of breast cancer awareness, reminding everyone to regularly check their breasts for early detection.



## CHANDON LADIES DAY

Thank you to the Australian Turf Club who chose us as the charity partner for the Chandon Ladies Lunch at Rosehill Race Course. What an amazing day and we look forward to many more.



## MOSMAN RUGBY

The continued support of Mosman Rugby and Mosman Junior Rugby allows us to spread our message and raise funds. The long term association with both Clubs is a wonderful part of the Foundations community.



## INCEPTORS

Brilliant Sydney rock band The Inceptors held a fantastic gig to raise money for the Foundation at the iconic Bridge Hotel.



## EASTS SYDNEY AFL

Easts Sydney AFL Club got on board and held a pink sock round with their Junior Teams. It was a lovely event and we enjoyed meeting everyone at the club and look forward to many more pink sock days.

# WE COULDN'T DO IT WITHOUT YOU!

Thank you to our Sponsors,  
Donors and Partners for your  
ongoing support of the Sydney  
Breast Cancer Foundation.

PRINCIPAL SPONSOR

## RICHARD CROOKES CONSTRUCTIONS

PRO BONO SUPPORTERS



RELIABLE | RENEWABLE | SUSTAINABLE

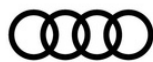
MAJOR PINK SPONSORS



PRIZE SPONSORS



**MANILDRA GROUP**  
100% AUSTRALIAN OWNED



**Audi** Centre Mosman



**BRITISH AIRWAYS**



KEY CORPORATE SPONSOR



**I-MED Radiology  
Network**  
Comprehensive care. Uncompromising quality.



**THE  
BOUJEE  
BOARDS**

**HOWARD  
SMITH  
WHARVES**  
EST. 1935



**dexus**  
Value Realised

**CLOUD  
collective**

**Well  
CONSULTING**



**VOGUE**  
AUSTRALIA

**INGRAM**  
MICRO

**FARMER'S WIFE**  
DISTILLERY



**JPY**



**essity**

**LEDA**

**AON**



# WHAT WE HAVE ACHIEVED IN 30 YEARS

Sydney Breast Cancer Foundation has raised millions of dollars over the past 30 years to support many varied and equally important programs. Some examples:

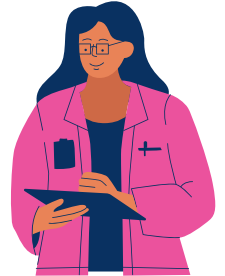


**\$2.25K** PER YEAR

Funded the positions of two full time Breast Care Nurses for 20 years

**\$1.25K** PER YEAR

Ongoing yearly funding of the SBCF Surgical Fellow at Chris O'Brien Life House for over 12yrs



**\$20K**

Purchase of SOZO Machine to help detect Lymphoedema

**\$750K**

Funded the establishment of the Tumour Bank Research project

**\$100K** PER YEAR

Funded treatments at The Living Room

**\$280K**

Purchase of Spy Machine

**\$95K**

Trident Machine – Hornsby Hospital

**\$68K**

Funding fellowship for a breast-specific radiologist at RNSH

**\$100K+**

Funded research fellowships in the areas of Surgical, Medical Oncology and Pathology.



**\$95K**

Trident Machine – Royal Women's

**\$240K**

Purchased a digital mammogram machine

**\$50K** PER YEAR

Partnership with Can Assist to help those in rural NSW with financial support in these trying times



**\$20K**

Established a free Wig Library

**\$40K**

Purchased a mobile Ultrasound Machine

**\$40K**

Sponsorship of "Fear of Recurrence" paper.

Purchased a Bio impedance machine, which assists with the diagnosis and treatment of lymphoedema in breast cancer survivors

**\$15K**

**\$200K**

Supplied and distributed over 100,000 Breast Check Shower cards

**\$60K**

Funded the production of "Communication & Breast Cancer" – a video for Surgeons and Doctors.

**\$10K**

Ice Socks and Gloves + Freezer for the Mater Hospital



**\$57K**

Funded the development of a course to secure a Diploma in Breast Care Nursing, UNSW



## **WHAT WE HAVE PLANNED FOR FY 24/25**

---



### **LADIES LUNCH 2024**

Friday 25th October at Royal Randwick Racecourse, Winx Room

### **SHOWER CARDS IN MULTIPLE LANGUAGES**

Printed in Mandarin, Arabic & Vietnamese in 2025

### **WARATAHS W PINK ROUND**

March 2025 at Alliance Stadium

### **ATC LADIES LUNCH**

March 2025 at the Rosehill Racecourse

### **MOSMAN RUGBY LADIES LUNCH**

May 2025 at Rawson Park Oval, Mosman

### **COMMUNITY EVENTS**

Held in various locations throughout the year

### **SCHOOL PROGRAMS**

Held in various schools throughout the year

### **RUGBY LONG LUNCH 2025**

Friday 1st August at the Hyatt Regency Hotel

# Financial Report

Sydney Breast Cancer Foundation Limited

ABN 22 658 275 195

For the year ended 30 June 2024



# Contents

|    |  |
|----|--|
| 3  | Directors' Declaration                                     |
| 4  | Statement of Profit or Loss and Other Comprehensive Income |
| 6  | Statement of Financial Position                            |
| 7  | Statement of Changes in Equity                             |
| 8  | Statement of Cash Flows                                    |
| 9  | Notes to the Financial Statements                          |
| 14 | Fundraising Activities Declaration                         |
| 15 | Independent Auditor's Report                               |
| 18 | Auditor's Independence Declaration                         |

# Directors' Declaration

## Sydney Breast Cancer Foundation Limited For the year ended 30 June 2024

The directors of the company declare that the company is not a reporting entity and that this special purpose financial report should be prepared in accordance with the accounting policies outlined in Note 1 of the financial statements.

In accordance with a resolution of the Board of Directors, the directors of the company declare that:

1. The financial statements and notes satisfy the requirements of the Australian Charities and Not-for-profits Commission Act 2012.
2. In the directors' opinion, there are reasonable grounds to believe that the company will be able to pay all of its debts, as and when they become due and payable.

Signed in accordance with subsection 60.15(2) of the Australian Charities and Not-for-profits Commission Regulations 2022.



Director

Name: LYNNE CROOKES

Dated: 11/12/2024

---

The accompanying notes form part of these financial statements.

# Statement of Profit or Loss and Other Comprehensive Income

## Sydney Breast Cancer Foundation Limited For the year ended 30 June 2024

|  | 30<br>JUNE<br>2024<br>(\$) | 30<br>JUNE<br>2023<br>(\$) |
|--|----------------------------|----------------------------|
| <b>Income</b>                                    |                            |                            |
| Interest Income                                  | 35,535                     | -                          |
| Donations  | 166,905                    | 255,784                    |
| Fundraising                                      | 503,501                    | 394,081                    |
| Sales  | 390,887                    | 382,808                    |
| Sponsorship                                      | 137,591                    | 115,000                    |
| Square Service Charges                           | 818                        | -                          |
| Chris O'Brien Lifehouse Contribution             | -                          | 972,898                    |
| <b>Total Income</b>                              | <b>1,235,237</b>           | <b>2,120,570</b>           |
| <b>Total</b>                                     | <b>1,235,237</b>           | <b>2,120,570</b>           |
| <b>Expenses</b>                                  |                            |                            |
| <b>Wages and Salaries</b>                        |                            |                            |
| Superannuation                                   | 9,955                      | 5,316                      |
| Wages and Salaries                               | 90,498                     | 50,631                     |
| <b>Total Wages and Salaries</b>                  | <b>100,452</b>             | <b>55,947</b>              |
| <b>Direct Costs of Fundraising Appeals</b>       |                            |                            |
| Advertising                                      | 307                        | 585                        |
| Agency / Outsourced Services                     | 35,236                     | 38,325                     |
| AV & Production                                  | 58,560                     | 30,628                     |
| Creative / Theming & Decorations                 | 6,484                      | -                          |
| Entertainment (Catering (Meals & Beverages))     | 221,917                    | 6,108                      |
| Freight & Courier                                | 2,196                      | 1,820                      |
| Fundraising Expense                              | 88,279                     | 71,279                     |
| Marketing & PR                                   | 45,036                     | 25,267                     |
| Merchandise                                      | 67,092                     | 5,317                      |
| Postage & Couriers                               | 2,265                      | 898                        |
| Printing, Stationery & Design                    | 13,881                     | 5,608                      |
| Square Fees                                      | 4,540                      | 5,571                      |
| Talent / Entertainment                           | 11,126                     | 9,500                      |
| Venue  | -                          | 36,632                     |
| <b>Total Direct Costs of Fundraising Appeals</b> | <b>556,920</b>             | <b>237,539</b>             |
| <b>Other Expenses</b>                            |                            |                            |
| Accountancy Fees                                 | 1,818                      | -                          |
| Annual Leave Provision                           | (1,183)                    | 2,058                      |
| Bank Fees  | (20)                       | 89                         |
| Depreciation                                     | 455                        | 264                        |

The accompanying notes form part of these financial statements.

During FY23, the Foundation separated from Chris O'Brien Lifehouse Cancer Hospital (COBLH). As a result of this separation, revenue in FY23 was higher than usual. The income entry in the Profit & Loss Statement titled "Chris O'Brien Lifehouse Contribution" represents the SBCF cash balance held at COBLH at the time of separation. This amount reflects SBCF's reserves built up over many years.



|   | 30<br>JUNE<br>2024<br>(\$) | 30<br>JUNE<br>2023<br>(\$) |
|---|----------------------------|----------------------------|
| Fees - Transaction (Stripe)                               | 5,232                      | 10,404                     |
| General Expenses  | 5,799                      | 2,143                      |
| Insurance   | 4,205                      | 3,309                      |
| Office Expenses - IT Hardware                             | -                          | 3,750                      |
| Rent  | 6,756                      | -                          |
| Sponsorship Expense                                       | 72,500                     | -                          |
| Subscriptions & Memberships                               | 5,768                      | 3,348                      |
| Telephone & Internet (IT Services & Telecomms)            | 873                        | 204                        |
| Travel - Taxi, Car Hire & Parking                         | 648                        | 943                        |
| Stripe Fees (no GST)                                      | 522                        | -                          |
| Chris O'Brien Lifehouse Expenses                          | -                          | 525,501                    |
| <b>Total Other Expenses</b>                               | <b>103,372</b>             | <b>552,012</b>             |
| <b>Total Expenses</b>                                     | <b>760,744</b>             | <b>845,497</b>             |
| <b>Profit/(Loss) Before Gifts</b>                         | <b>474,493</b>             | <b>1,275,073</b>           |
| <b>Gifts Made</b>   |                            |                            |
| Funding Commitment  | 398,748                    | 113,022                    |
| <b>Total Gifts Made</b>                                   | <b>398,748</b>             | <b>113,022</b>             |
| <b>Net Profit / (Loss)</b>                                | <b>75,745</b>              | <b>1,162,051</b>           |
| <b>Other Comprehensive Income</b>                         | <b>-</b>                   | <b>-</b>                   |
| <b>Total Comprehensive Income / (Loss) for the Period</b> | <b>75,745</b>              | <b>1,162,051</b>           |

The accompanying notes form part of these financial statements.

During FY23, the Foundation separated from Chris O'Brien Lifehouse Cancer Hospital (COBLH). As a result of this separation, revenue in FY23 was higher than usual. The income entry in the Profit & Loss Statement titled "Chris O'Brien Lifehouse Contribution" represents the SBCF cash balance held at COBLH at the time of separation. This amount reflects SBCF's reserves built up over many years.

# Statement of Financial Position

Sydney Breast Cancer Foundation Limited

As at 30 June 2024

|   | 30<br>JUNE<br>2024<br>(\$) | 30<br>JUNE<br>2023<br>(\$) |
|---|----------------------------|----------------------------|
| <b>Assets</b>                                       |                            |                            |
| <b>Current Assets</b>                               |                            |                            |
| <b>Cash and Equivalents</b>                         |                            |                            |
| New Stripe AUD                                      | 18                         | -                          |
| SBCF  | 596,017                    | 827,063                    |
| Stripe AUD  | 1,935                      | 348                        |
| <b>Total Cash and Equivalents</b>                   | <b>597,970</b>             | <b>827,411</b>             |
| <b>Receivables</b>                                  |                            |                            |
| Accounts Receivable                                 | 27,021                     | -                          |
| <b>Total Receivables</b>                            | <b>27,021</b>              | <b>-</b>                   |
| <b>Other Current Assets</b>                         |                            |                            |
| Prepayments   | (24,300)                   | 29,638                     |
| <b>Total Other Current Assets</b>                   | <b>(24,300)</b>            | <b>29,638</b>              |
| <b>Total Current Assets</b>                         | <b>600,691</b>             | <b>857,048</b>             |
| <b>Non-Current Assets</b>                           |                            |                            |
| <b>Property, plant and equipment</b>                |                            |                            |
| Computer Equipment                                  | 1,358                      | 1,358                      |
| Less Accumulated Depreciation on Computer Equipment | (719)                      | (264)                      |
| <b>Total Property, plant and equipment</b>          | <b>639</b>                 | <b>1,094</b>               |
| <b>Total Non-Current Assets</b>                     | <b>639</b>                 | <b>1,094</b>               |
| Term Deposits                                       | 1,000,000                  | 750,000                    |
| <b>Total Assets</b>                                 | <b>1,601,330</b>           | <b>1,608,142</b>           |
| <b>Liabilities</b>                                  |                            |                            |
| <b>Current Liabilities</b>                          |                            |                            |
| Accounts Payable                                    | 39,637                     | 21,952                     |
| GST   | (16,119)                   | 2,817                      |
| PAYG Withholdings Payable                           | 5,016                      | 5,728                      |
| Provision for Annual Leave                          | 874                        | 2,058                      |
| Superannuation Payable                              | 1,531                      | -                          |
| Accrued Expenses                                    | 8,318                      | 89,261                     |
| <b>Total Current Liabilities</b>                    | <b>39,257</b>              | <b>121,815</b>             |
| <b>Total Liabilities</b>                            | <b>39,257</b>              | <b>121,815</b>             |
| <b>Net Assets</b>                                   | <b>1,562,072</b>           | <b>1,486,327</b>           |
| <b>Equity</b>                                       |                            |                            |
| Accumulated Profits                                 | 1,562,072                  | 1,486,327                  |
| <b>Total Equity</b>                                 | <b>1,562,072</b>           | <b>1,486,327</b>           |

The accompanying notes form part of these financial statements.

# Statement of Changes in Equity

Sydney Breast Cancer Foundation Limited

For the year ended 30 June 2024

|                                   | ACCUMULATED<br>SURPLUS<br>(\$) | CAPITAL<br>RESERVE<br>(\$) | TOTAL EQUITY     |
|-----------------------------------|--------------------------------|----------------------------|------------------|
| <b>1. Equity</b>                  |                                |                            |                  |
| <b>2023 Financial Year</b>        |                                |                            |                  |
| Balance as at 30 June 2022        | 324,276                        | -                          | -                |
| Net Profit for the Year           | 1,162,051                      | -                          | -                |
| Transfer to General Reserve       | -                              | -                          | -                |
| <b>Balance as at 30 June 2023</b> | <b>1,486,327</b>               | <b>-</b>                   | <b>1,486,327</b> |
| <b>2024 Financial Year</b>        |                                |                            |                  |
| Balance as at 30 June 2023        | 1,486,327                      | -                          | -                |
| Net Loss/Profit for the Year      | 106,545                        | -                          | -                |
| <b>Balance as at 30 June 2024</b> | <b>1,592,872</b>               | <b>-</b>                   | <b>1,592,872</b> |

The accompanying notes form part of these financial statements.



# Statement of Cash Flows

## Sydney Breast Cancer Foundation Limited For the year ended 30 June 2024

|   | 2024<br>(\$)     | 2023<br>(\$)     |
|---|------------------|------------------|
| <b>Cash flows from Operating Activities</b>       |                  |                  |
| Receipts from customers                           | 392,199          | 399,292          |
| Payments to suppliers and employees               | (101,164)        | (50,219)         |
| GST refunded/(paid)                               | 10,074           | (28,796)         |
| Cash receipts from other operating activities     | 869,191          | 1,828,094        |
| Cash payments for other operating activities      | (1,091,649)      | (883,617)        |
| <b>Total Cash flows from Operating Activities</b> | <b>78,651</b>    | <b>1,264,754</b> |
| <b>Cash flows from Investing Activities</b>       |                  |                  |
| Payment for property, plant and equipment         | -                | (1,358)          |
| Other cash items from investing activities        | 29,638           | (29,638)         |
| Term Deposits                                     | (250,000)        | (750,000)        |
| <b>Total Cash flows from Investing Activities</b> | <b>(220,363)</b> | <b>(780,996)</b> |
| <b>Cash flows from Other Activities</b>           |                  |                  |
| Other activities                                  | (87,729)         | 89,261           |
| <b>Total Cash flows from Other Activities</b>     | <b>(87,729)</b>  | <b>89,261</b>    |
| <b>Net increase/(decrease) in cash held</b>       | <b>(229,441)</b> | <b>573,019</b>   |
| <b>Cash Balances</b>                              |                  |                  |
| Opening cash balance                              | 827,411          | 254,392          |
| Closing cash balance                              | 597,970          | 827,411          |
| Movement in cash                                  | (229,441)        | 573,019          |

The accompanying notes form part of these financial statements.

# Notes to the Financial Statements

## Sydney Breast Cancer Foundation Limited

For the year ended 30 June 2024

### 1. Statement of Significant Accounting Policies

The company is a not-for-profit entity for financial reporting purposes under Australian Accounting Standards. The directors of company have prepared the financial statements on the basis that they satisfy the requirements of the Australian Charities and Not-for-profits Commission Act 2012 and that the company is a non-reporting entity because there are no users dependent on general purpose financial statements. The financial statements are therefore special purpose financial statements that have been prepared in order to meet the needs of the company and the Australian Charities and Not-for-profits Commission Act 2012.

On an overall basis, the financial statements comply with the recognition and measurement requirements in Australian Accounting Standards in relation to cash and cash equivalents, financial instruments, income (including other income) and related receivables and expenses and related payables.

The financial statements have been prepared in accordance with the significant accounting policies disclosed below, which the directors have determined are appropriate to meet the purpose of the company. Such accounting policies are consistent with the previous period unless stated otherwise.

All amounts included in the financial statements are denominated in Australian Dollars unless otherwise stated.

The financial statements have been prepared on an accruals basis and are based on historical costs unless otherwise stated in the notes.

The accounting policies that have been adopted in the preparation of these statements are set out in the paragraphs below.

### 2. Income Tax

The company is endorsed to access the exemption from income tax under Subdivision 50-B of the Income Tax Assessment Act 1997.

### 3. Cash and Cash Equivalents

Cash and cash equivalents include cash on hand, deposits held on call with banks, other short-term highly liquid investments with original maturities of three months or less.

### 4. Financial Instruments

#### Recognition, Initial Measurement and Derecognition

Financial assets and financial liabilities are recognised when the company becomes a party to the contractual provisions of the financial instrument, and are measured initially at fair value adjusted by transactions cost. Subsequent measurement of financial assets and financial liabilities are described below.

Financial assets are derecognised when the contractual rights to the cash flows from the financial asset expire, or when the financial asset and all substantial risk and reward are transferred. A financial liability is derecognised when it is extinguished, discharged, cancelled or expires.

---

The accompanying notes form part of these financial statements.

### **Classification and Subsequent Measurement of Financial Assets**

Except for those trade receivables that do not contain a significant financing component and are measured at the transaction price in accordance with AASB 15, all financial assets are initially measured at fair value adjusted for transaction costs (where applicable).

Financial assets are subsequently measured at fair value through profit or loss (FVPL) with changes in carrying value being included under other income in Statement of Profit or Loss and Other Comprehensive Income.

Quoted bid prices in an active market are used to determine fair value whenever possible. In other circumstances such as for unlisted investments, valuation techniques are adopted as agreed by the directors, including recent arm's length transactions, reference to similar instruments, historical cost and option pricing models.

### **5. Related Party Transactions**

There were no reportable transactions with related parties during the financial year.

### **6. Key Management Personnel Compensation**

There was no compensation paid to Key Management Personnel during the financial year.

### **7. Revenue and Other Income**

SBCF formally separated from the Chris O'Brien Lifehouse (COBLH) cancer hospital in April 2023 to become an independent charity. During our time embedded within COBLH, COBLH maintained within its financial records a set of SBCF-specific accounts. At separation, these were unwound. This unwinding is reflected in our FY23 financial statements, most obviously in our Statement of Profit and Loss. The Income entry, "Chris O'Brien Lifehouse Contribution", was the SBCF cash balance at COBLH at the time of separation, while "Chris O'Brien Lifehouse Expenses" represents the total expenses owed to COBLH. Post separation our support of COBLH continues, with COBLH now invoicing SBCF monthly and this is reflected under "Funding commitment".

Interest, rent, hire and donations revenue is recognised when it is received or credited to the company. Dividends, trust distributions and refundable franking credits revenue is recognised when the right to receive the consideration has been established.

SBCF's revenue in FY23 was higher than usual due to the COBLH separation. The Income entry in the Profit & Loss Statement, "Chris O'Brien Lifehouse Contribution", was the SBCF cash balance at COBLH at the time of separation. This represents SBCF's reserves, built up over many years. SBCF aims to keep three years' worth of funding commitments in reserves in the event of unplanned impacts to its ability to raise funds, or to free it to meet special, one-off requests, e.g. for the purchase of hospital machinery in support of SBCF's purpose.

### **8. Expenses**

Distributions or gifts to eligible recipients are recognised as an expense to the company when they are paid.

---

The accompanying notes form part of these financial statements.

## 9. Funding Commitment

The company, in response to a request from Chris O'Brien Lifehouse, has entered into the following annual funding commitment. This directly funds a breast cancer Research Fellow, breast care nurse and a variety of oncology and lymphoedema related therapies and services for Lifehouse breast cancer patients. In response to a request from Royal North Shore Hospital, SBCF has entered into a six-month funding commitment to support a Radiography Fellowship

SBCF also purchased two Trident® HD Specimen Radiography System machines, one for Hornsby Hospital and another for the Royal Hospital For Women. These machines provide surgeons with clear and detailed images of the breast cancer site during surgery, enabling more precise excisions, reducing the time patients spend under anaesthesia and contributing to faster recovery. SBCF has also made a \$20,000 funding commitment to the Cancer Assistance Network (Can Assist) supporting breast cancer patients in rural NSW to help overcome the geographical and financial barriers to cancer care.

| Recipient organisation   | Funding commitment |
|--|--------------------|
| Chris O'Brien Lifehouse  | \$175,000          |
| Hornsby Hospital   | \$105,600          |
| The Royal Hospital For Women Foundation                            | \$101,750          |
| Royal North Shore Hospital Radiography Fellowship (six-month term) | \$68,500           |
| Can Assist   | \$20,000           |

## 10. Critical Accounting Estimates and Judgements

The directors evaluate estimates and judgements incorporated into the financial statements based on historical knowledge and best available current information. Estimates assume a reasonable expectation of future events and are based on current trends and economic data, obtained both externally and within the company.

## 11. Members' Liability

Members' Liability as at 30 June 2024.

| Member                 | Amount of liability |
|------------------------|---------------------|
| Lynne Crookes          | \$1.00              |
| Catherine West         | \$1.00              |
| Deborah West           | \$1.00              |
| Renae Lopez-Buckley    | \$1.00              |
| <b>Total Liability</b> | <b>\$4.00</b>       |

## 12. Events After the Reporting Date

The directors are not aware of any significant events since the end of the reporting period.

The accompanying notes form part of these financial statements.



### 13. Company Details

The principal place of business is:

Level 14, 558 Pacific Highway  
St Leonards NSW 2065

The company is a not for profit entity and has been established for charitable purposes only.

### 14. Principal Activities

The purpose of the company is to promote the detection, management, and cure of breast cancer, and improve the quality of life and survival rates of breast cancer patients.

### 15. Fundraising Appeals Conducted During the Financial Year

Fundraising appeals conducted during the financial year included the receiving of directly and indirectly solicited donations.

|  | 2024 \$        | 2023 \$        |
|--|----------------|----------------|
| <b>Fundraising Appeals</b>   |                |                |
| <b>(i) Results of fundraising appeals</b>                                |                |                |
| Gross proceeds from fundraising:   | 503,501        | 394,081        |
| Donations received   | 166,905        | 255,784        |
| Less: direct costs of fundraising appeals                                | (556,920)      | (237,539)      |
| <b>Total</b>   | <b>113,486</b> | <b>412,326</b> |
| <b>(ii) Application of net surplus obtained from fundraising appeals</b> |                |                |
| Gifts paid   | 398,748        | 113,022        |
| Administration expenses  | 198,071        | 72,054         |
| Chris O'Brien Lifehouse Expenses   | -              | 525,501        |
| <b>Total</b>   | <b>596,819</b> | <b>710,577</b> |

The accompanying notes form part of these financial statements.

# Notes to the Financial Statements

## Sydney Breast Cancer Foundation Limited

For the year ended 30 June 2024

|   | (\$)      | %      | (\$)      | %      |
|---|-----------|--------|-----------|--------|
| <b>(iii) Comparison of certain monetary figures and percentages</b> |           |        |           |        |
| Total cost of fundraising/  | 503,501   | -      | 237,539   | -      |
| Gross income from donations   | 670,406   | 75.10% | 649,865   | 36.55% |
| Net surplus from donations/   | 166,905   | -      | 412,326   | -      |
| Gross income from donations   | 670,406   | 24.90% | 649,865   | 63.45% |
| Total gifts paid/   | 398,748   | -      | 113,022   | -      |
| Total expenditure   | 760,744   | 52.42% | 845,497   | 13.37% |
| Total gifts paid/   | 398,748   | -      | 113,022   | -      |
| Total income received from operating activities <sup>1</sup>        | 1,235,237 | 32.28% | 2,120,570 | 5.33%  |

The accompanying notes form part of these financial statements.

1. SBCF's revenue in FY23 was higher than usual due to the COBLH separation. The Income entry in the Profit & Loss Statement, "Chris O'Brien Lifehouse Contribution", was the SBCF cash balance at COBLH at the time of separation. This represents SBCF's reserves, built up over many years. SBCF aims to keep three years' worth of funding commitments in reserves in the event of unplanned impacts to its ability to raise funds, or to free it to meet special, one-off requests, e.g. for the purchase of hospital machinery in support of SBCF's purpose.

# Fundraising Activities Declaration

## Sydney Breast Cancer Foundation Limited For the year ended 30 June 2024

The directors of the trustee company of Sydney Breast Cancer Foundation Limited declare that in their opinion:

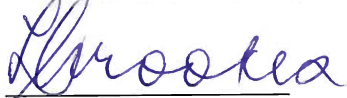
a) the financial report gives a true and fair view of all income and expenditure of the Trust with respect to fundraising appeal activities for the financial year ended 30 June 2024;

b) the statement of financial position gives a true and fair view of the state of affairs of the Trust with respect to fundraising appeal activities as at 30 June 2024;

c) the provisions of the Charitable Fundraising (NSW) Act 1991 and Regulations under that Act and the conditions attached to the authority have been complied with during the year ended 30 June 2024; and

d) the internal controls exercised by the Trust are appropriate and effective in accounting for all income received and applied by the Trust from any of its fundraising appeals.

This declaration is made in accordance with a resolution of the Board of Directors of the trustee company.



Director:

Dated: 11/12/2024

---

The accompanying notes form part of these financial statements.

**INDEPENDENT AUDITOR'S REPORT  
TO THE MEMBERS OF  
SYDNEY BREAST CANCER FOUNDATION LIMITED**

**Assura Group Pty Ltd**  
ABN : 30 114 712 462  
Suite 15, Lvl 2  
123 Clarence Street  
Sydney NSW 2000

**Report on the Audit of the Financial Report**

**t 1300 55 33 38**

**[www.assuragroup.com.au](http://www.assuragroup.com.au)**

**Auditor's Opinion**

We have audited the accompanying financial report, being a special purpose financial report of Sydney Breast Cancer Foundation Limited, which comprises the statement of financial position as at 30 June 2024, the statement of profit or loss and other comprehensive income, the statement of changes in equity and the statement of cash flows for the year then ended, and notes to the financial statements, including a summary of material accounting policies, and directors' declaration.

In our opinion, the financial report presents fairly, in all material respects, the financial position of Sydney Breast Cancer Foundation Limited as at 30 June 2024 and its financial performance for the year then ended in accordance with the accounting policies as described in Note 1 to the financial statements, including satisfying the requirements of subdivision 60-C (Annual financial reports) of the Australian Charities and Not-for-Profits Commission Act 2012.

**Basis for Opinion**

We conducted our audit in accordance with Australian Auditing Standards. Our responsibilities under those standards are further described as in the Auditor's Responsibilities for the Audit of the Financial Report section of our report. We are independent of Sydney Breast Cancer Foundation Limited in accordance with the auditor independence requirements and of the ethical requirements of the Accounting Professional and Ethical Standards Board's APES 110 Code of Ethics for Professional Accountants (the code) that are relevant to our audit of the financial report in Australia. We have also fulfilled our other ethical responsibilities in accordance with the Code.

We believe that the audit evidence we have obtained is sufficient and appropriate to provide a basis for our opinion.

**Emphasis of Matter – Basis of Accounting**

We draw attention to Note 1 of the financial report, which describes the basis of accounting. The financial report has been prepared for the purpose of fulfilling the directors'/trustee's financial reporting responsibilities under the requirements of subdivision 60-C (Annual financial reports) of the Australian Charities and Not-for-profits Commission Act 2012. As a result, the financial report may not be suitable for another purpose. Our opinion is not modified in respect of this matter.



**INDEPENDENT AUDITOR'S REPORT (cont'd)  
TO THE MEMBERS OF  
SYDNEY BREAST CANCER FOUNDATION LIMITED**

**Responsibilities of the Directors for the Financial Report**

The directors of the company are responsible for the preparation of the financial report that gives a true and fair view in accordance with Australian Accounting Standards and the *Australian Charities and Not-for-profits Commission Act 2012* and for such internal control as the directors determine is necessary to enable the preparation of the financial report that gives a true and fair view and is free from material misstatement, whether due to fraud or error.

In preparing the financial report, the directors are responsible for assessing Sydney Breast Cancer Foundation Limited's ability to continue as a going concern, disclosing, as applicable, matters related to going concern and using the going concern basis of accounting unless the directors either intend to liquidate the company or to cease operations, or have no realistic alternative but to do so. The directors are responsible for overseeing Sydney Breast Cancer Foundation Limited's financial reporting process.

**Auditor's Responsibilities for the Audit of the Financial Report**

Our objectives are to obtain reasonable assurance about whether the financial report as a whole is free from material misstatement, whether due to fraud or error, and to issue an auditor's report that includes our opinion. Reasonable assurance is a high level of assurance, but is not a guarantee that an audit conducted in accordance with the Australian Auditing Standards will always detect a material misstatement when it exists. Misstatements can arise from fraud or error and are considered material if, individually or in the aggregate, they could reasonably be expected to influence the economic decisions of users taken on the basis of this financial report.

As part of an audit in accordance with the Australian Auditing Standards, we exercise professional judgement and maintain professional scepticism throughout the audit. We also:

- Identify and assess the risks of material misstatement of the financial report, whether due to fraud or error, design and perform audit procedures responsive to those risks, and obtain audit evidence that is sufficient and appropriate to provide a basis for our opinion. The risk of not detecting a material misstatement resulting from fraud is higher than for one resulting from error, as fraud may involve collusion, forgery, intentional omissions, misrepresentations, or the override of internal control.
- Obtain an understanding of internal control relevant to the audit in order to design audit procedures that are appropriate in the circumstances, but not for the purpose of expressing an opinion on the effectiveness of the Sydney Breast Cancer Foundation Limited's internal control.
- Evaluate the appropriateness of accounting policies used and the reasonableness of accounting estimates and related disclosures made by the directors.

**INDEPENDENT AUDITOR'S REPORT (cont'd)  
TO THE MEMBERS OF  
SYDNEY BREAST CANCER FOUNDATION LIMITED**

**Auditor's Responsibilities for the Audit of the Financial Report (cont'd)**

- Conclude on the appropriateness of the director's use of the going concern basis of accounting and, based on the audit evidence obtained, whether a material uncertainty exists related to events or conditions that may cast significant doubt on Sydney Breast Cancer Foundation Limited's ability to continue as a going concern. If we conclude that a material uncertainty exists, we are required to draw attention in our auditor's report to the related disclosures in the financial report, if such disclosures are inadequate, to modify our opinion. Our conclusions are based on the audit evidence obtained up to the date of our auditor's report. However, future events or conditions may cause the Entity to cease to continue as a going concern.
- Evaluate the overall presentation, structure and content of the financial report, including the disclosures, and whether the financial report represents the underlying transactions and events in a manner that achieves fair presentation.

We communicate with the directors regarding, among other matters, the planned scope and timing of the audit and significant audit findings, including any significant deficiencies in internal controls that we identify during our audit.

We also provide the management with a statement that we have complied with relevant ethical requirements regarding independence, and to communicate with them all relationships and other matters that may reasonably be thought to bear on our independence, and where applicable, related safeguards.

From the matters communicated with the management, we determine those matters that were of most significance in the audit of the financial report of the current period and are therefore the key audit matters. We describe these matters in our auditor's report unless law or regulation precludes public disclosure about the matter or when, in extremely rare circumstances, we determine that a matter should not be communicated in our report because the adverse consequences of doing so would reasonably be expected to outweigh the public interest benefits of such communication.

**Assura Group Pty Ltd  
Chartered Accountants**



**Graham Judkowski  
Director**

Date: 11 December 2024

## **AUDITORS' INDEPENDENCE DECLARATION**

In accordance with the requirements of section 60-40 of the Australian Charities and Not-for-profits Commission Act 2012, as auditor of Sydney Breast Cancer Foundation Limited for the year ended 30 June 2024, I declare that, to the best of my knowledge and belief, there have been

- No contraventions of the auditor independence requirements of the Australian Charities and Not-for-profits Commission Act 2012 and in relation to the audit; and
- No contraventions of any applicable code of professional conduct in relation to the audit.

**Assura Group Pty Ltd**  
**Chartered Accountants**

A handwritten signature in blue ink, appearing to read "Graham Judkowski".

**Graham Judkowski**  
**Director**

Date: 11 December 2024