

FY 2022/2023



ANNUAL REPORT

SYDNEY BREAST CANCER FOUNDATION

CONTENTS

Meet the team	03
A word from the chair	04
Our mission	05
What we have achieved this year	06
Our impact	
<i>The SBCF Fellowship Program</i>	07
<i>The Chris O'Brien Lifehouse Nurse</i>	08
<i>The Living Room</i>	09
<i>The Hardship Fund</i>	10
<i>Donated Equipment</i>	11
Awareness	
<i>Shower Cards</i>	12
<i>Waratahs W Partnership</i>	13
<i>Burpees4Boobs</i>	14
<i>Communication</i>	15
How we achieved all this	16
Sponsorships	17
What we have achieved in 29 yrs	18
Coming up in FY2023/2024	19
Financials for FY2022/2023	20

MEET THE TEAM

2022/2023

"It's like a seismic event in their life..., yet they remain positive and demonstrate hope - I am inspired by my patients." - Ass Prof Sanjay Warriar

BOARD MEMBERS



Chair

Lynne Crookes,
OAM



Director

Catherine West



Director

Renae Lopez



Director

Deborah West



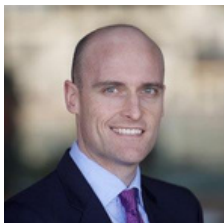
Director

Laura Durkan



Director

Miriam Stiel



Treasurer

Simon Murray



Director

Lucy Vecchio

SUB-COMMITTEES

Medical Advisory Committee

- Ass Prof Richard West - Chair
- Ass Prof Sanjay Warriar
- Ass Prof Cindy Mak
- Ass Prof Jane Beith

Risk And Finance Committee

- Simon Murray - Chair
- Catherine West
- Miriam Stiel
- Renae Lopez

Events Committee

- Deborah West - Co Chair
- Renae Lopez - Co - Chair
- Lucy Vecchio
- Anne West

STAFF

Foundation Manager

- Annie Zukerman

Event Manager

- Jo Stiel

Accounts Manager

- Lulie Murray

Social Media Manager

- Lily Avery

AMBASSADORS



Angela Bishop



Jessica Rowe

A WORD FROM THE CHAIR



2022/2023 has been a very important time for Sydney Breast Cancer Foundation (SBCF) as it is our first financial year as an independent charity. We have moved out of the Chris O'Brien Lifehouse (Lifehouse) building and into the offices of Richard Crookes Constructions. They have very generously given us the space and support from all their staff, for which we can't thank them enough. We still support the Breast Clinic at Lifehouse including funding the SBCF Surgical Fellow, a breast care nurse and the therapists in the Living Room.

However, we are now able to spread our funding to other needy areas including, through our Hardship Program, patients and families needing our support in these difficult times.

Our two major events have been more successful than ever:

- Rugby Long Lunch raised \$452,000.
- Ladies' Lunch raised \$215,000.

Raising awareness has always been a very important part of SBCF. Towards this end we have started and/or continued:

- A school's program with speakers talking about breast cancer.
- Sponsorship of the W Waratahs and women's rugby in New South Wales. As we support them, and they wear our logo on their jersey's we also encourage girls to take part in rugby. The Waratahs W also had a game at the Stadium wearing pink boot laces to promote breast cancer awareness.
- Mosman Rugby Club and Mosman Junior Rugby, plus Shore School, had pink socks days. This was important to bring awareness to boys and men plus it also raised money for SBCF.

My thanks go out to our Surgeons at Lifehouse, Cindy Mak and Sanjay Warriar, plus our Medical Oncologist Jane Beith – and all other breast surgeons in every hospital. I would like to thank all those who have volunteered for us at our events this year. Also, the Defence Force personnel who have been volunteering for us at the Ladies' Lunch for many years.

We thank all our amazing sponsors whose support helps make what we do possible.

Lastly, thank you to my amazing Board of hard-working volunteers – they are all parents and work full time but give their all to our cause. And thank you so much to our Foundation Manager Annie Zukerman and our new Events Manager Jo Stiel who joined us this year.

I look forward to seeing you at our events and if you wish to volunteer for anything please let Annie know at hello@sbcf.org.au.

LYNNE CROOKES, OAM,
CHAIR



OUR MISSION

BEATING BREAST CANCER TOGETHER

Sydney Breast Cancer Foundation is dedicated to raising awareness and funds in support of women and men with breast cancer.

Established in 1995, by a group of passionate doctors, surgeons, and advocates committed to supporting breast cancer patients by raising much-needed funds in support of research, treatment, and care including for breast care units.



AWARENESS

Educate the community and encourage proactive self-examination



SUPPORT

Help families through information, funding nurses and a hardship fund



RESEARCH

Funding researching including genomic research and fellowships



TREATMENT

Providing funding to breast care units across New South Wales

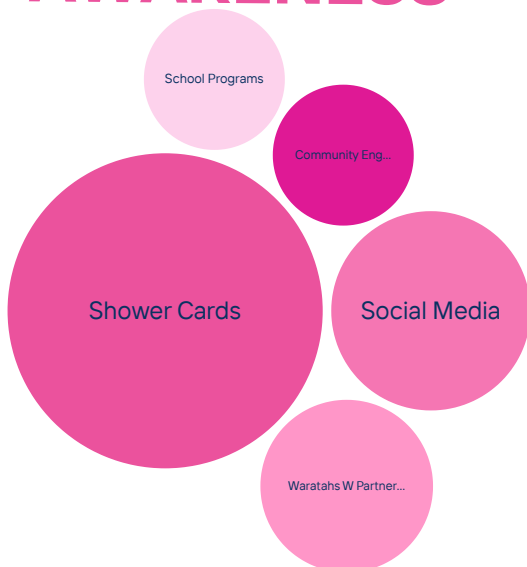


WHAT WE DO AT THE FOUNDATION

The Sydney Breast Cancer Foundation's mission is to improve the early detection of breast cancer and the quality of life & survival rates of breast cancer patients.

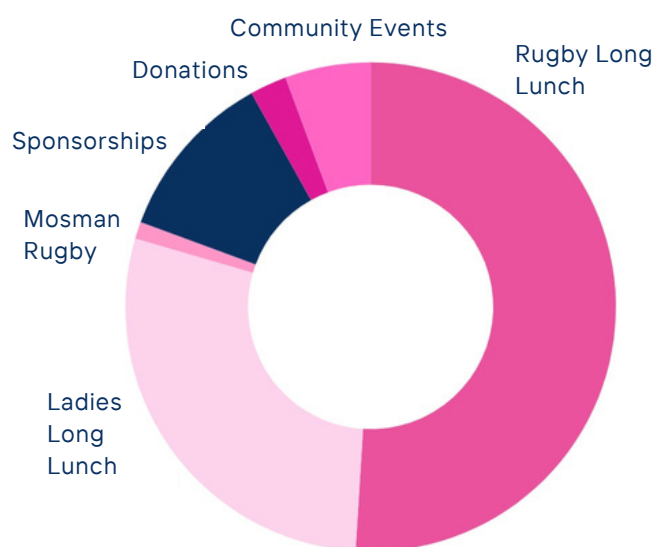


AWARENESS



Raised breast cancer awareness through distributing self-exam cards, promoting checks in the community, educating women and men on the importance of early detection.

FUNDRAISING



The Sydney Breast Cancer Foundation is committed to raising funds for patients facing their breast cancer journey.

THE SBCF FELLOWSHIP PROGRAM AT LIFEHOUSE



We are very proud to continue to support the SBCF Fellowship Program at LifeHouse supporting a surgical fellow. This years program allows the fellows to gain experience in a number of different types of procedures including rotational flaps for breast conserving surgery, non wired based localisation of breast lesions and importantly different techniques for implant based reconstruction.

“Throughout the fellowship, I had the opportunity to learn new surgical techniques and gain a better appreciation of the intricacies of breast reconstruction. The mentorship I received has been instrumental in refining my surgical skills and compassion towards patients.

It has been rewarding to have the opportunity to closely interact with patients, witnessing their journeys from diagnosis to recovery. These experiences have heightened my sensitivity to the emotional and psychological aspects of breast surgery, reinforcing the importance of effective communication and compassionate care.” - Dr Susan Hawes - current SBCF Fellow at Lifehouse



THE CHRIS O'BRIEN LIFE HOUSE BREAST CARE NURSE



It is a privilege to continue our support of the Breast Care Nurse at Lifehouse. We have funded breast care nurses for many years as we know how important their role is in a patient's breast cancer journey.

Breast care nurses provide crucial support for patients by way of:

- Coordinating care and treatment.
- Address concerns as a primary and continual point of contact and reference.
- Managing side effects and post-operative care plans.

Helena Lee is a clinical Nurse Specialist with the Lifehouse breast team and proudly funded by the Sydney Breast Cancer Foundation.

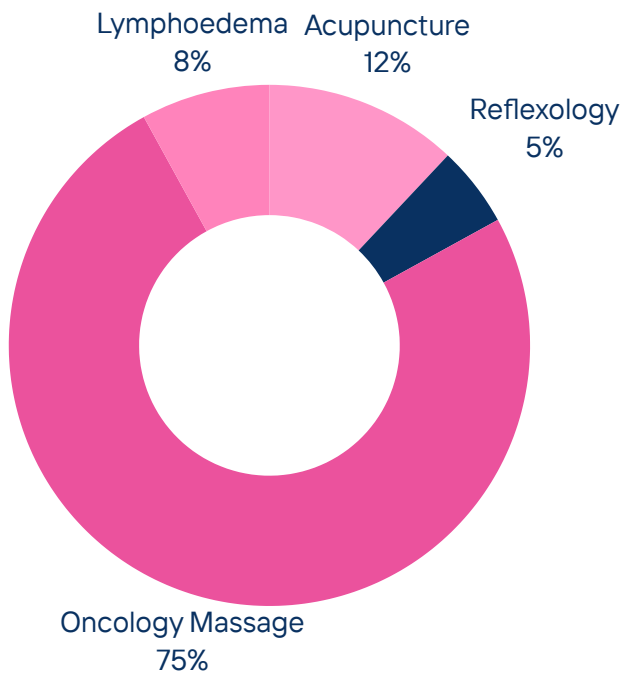
"I am inspired by my patients every day. Each patient has a story and a voice, and as an advocate, I am there to listen and help navigate their cancer journey in "Beating Breast Cancer together" - Helena Lee, Breast Care Nurse



THE LIVING ROOM

TOTAL SBCF FUNDED TREATMENTS: OVER 450 YEARLY

The Living Room is the home of supportive care and integrative medicine at Chris O'Brien Lifehouse. The Living Room gives patients at Lifehouse the chance to have the best quality of life while living with cancer, the Lifehouse cares for the whole person and consider their physical, psychological and social well-being as a crucial part of treatment. Sydney Breast Cancer Foundation has proudly funded treatments at the Living Room for many years.



Average treatments per qtr

“I received six massages (four covered by SBCF). Four complimentary treatments made a big difference as money was going out in all directions and one stress was taken away.” - Patient 42yrs

“All patients are very grateful for the donation and support from SBCF. Many utilise 4/4 treatments and are extremely grateful. For many this complimentary treatment is their only possible access to manual therapy.” - Living Room Manager

HARDSHIP FUND

The Sydney Breast Cancer Foundation Hardship Fund was established to provide financial assistance and support to individuals who are currently battling breast cancer and experiencing acute financial hardship as a result. We understand that breast cancer not only takes a toll on one's physical and emotional well-being but also creates financial challenges and we would like to help ease that burden where we can.

Vanessa S is under going breast cancer treatment and we have been thrilled to financially support her. Here is her story.

"In 2019 I was diagnosed with stage 4 breast cancer at age 32. I'm a mum of two children Emily, 7 and Henry, 6 years old. I'm married to a wonderful man, James, who is a serving police officer with NSW police. I'm a teacher in the Catholic Education System.

It's been a horrible scary 5 years and after the initial surgery and chemotherapy, like many others I thought we were okay and in remission despite an ongoing battle with lymphoedema and needing to see the Physio fortnightly.

Early last year during routine testing they found a lump in my lung and the operated immediately (deflating my lung to remove the tumour), We had such hopes after this surgery. I was put on 3 monthly pet scans and ultrasounds but earlier this year they found another lump in my breast. After another round of tests, I've just been through more surgery for an aggressive growth in my breast and I'm waiting for pathology results and the next step.

I am sure you are told this all the time but treatment for Breast Cancer is so expensive and given the nature of my secondary cancer I fear it will be a long and expensive fight. If there is any chance of support from the Foundation, we would be extremely grateful."



DONATED EQUIPMENT

SBCF is often approached to help fund new, or updates, to equipment that is a vital part of the care given to breast cancer patients.

SOZO MACHINE



SBCF funded the purchase of the SOZO machine at LifeHouse that uses biospectrometry to assess and detect Lymphoedema in breast cancer patients.

The SOZO detects even the smallest changes in your fluid levels that helps tell the nurses how they can best manage your condition by sending an electrical pulse through the body. By measuring fluid levels and other medical measurements you can keep track of fluid levels, particularly in lymphoedema patients. It can also be used pre and post cancer treatments to test if anything has changed within a body.

The introduction of the SOZO machine has allowed LifeHouse to open a lymphoedema testing clinic in their onsite breast unit. This service has helped many women be diagnosed with lymphoedema far earlier than usual resulting in improved outcomes for the patients.

SPY MACHINE

SBCF funded the SPY Elite, a high-precision imaging machine used in breast reconstruction surgery at the Chris O'Brien Lifehouse Breast Care Unit.

The first of its kind in Australia, the machine allows surgeons to monitor blood flow to different areas of the breast during surgery and reconstruction. Low circulation puts patients at risk of tissue damage and infection, sometimes leading to a failed reconstruction. The SPY machine can identify these areas of low blood flow and allows surgeons to adjust their techniques accordingly to deliver better results.

“We’re now able to assess on table what’s happening to the skin after we do a mastectomy and by doing that we’re able to anticipate any particular concerns and address them immediately.” - A/Prof Sanjay Warriar



20,000 SHOWER CHECK CARDS DISTRIBUTED ACROSS THE WORLD FOR FREE IN THE PAST 12 MONTHS

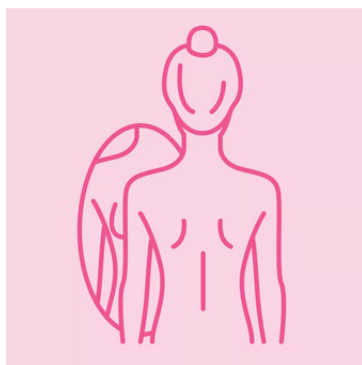
Sydney Breast Cancer Foundations mission is to improve the early detection of breast cancer and the quality of life & survival rates of breast cancer patients.

The questions is - Are you Breast Aware? Do you check how your breasts look and feel once a month for any signs of change?

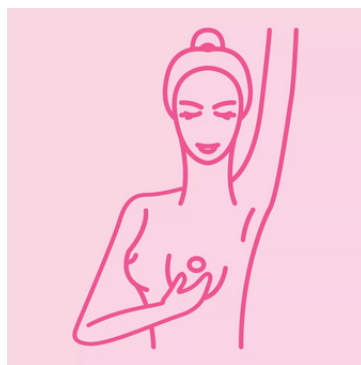
Self-breast examinations can increase the chances of early detection and diagnosis, and results have shown that such early detection leads to an increase in survival rates. You know your breasts better than anyone else so if you don't already check - now is the time to start. Early detection is the best prevention. Don't leave it until it's too late.

While mammograms can help you to detect cancer before you can feel a lump, self breast examinations help you to be familiar with how your breasts look and feel so you can alert your healthcare professional if there are any changes.

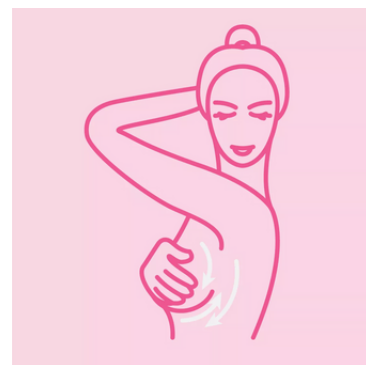
THE 3 STEP BREAST CHECK



LOOK



LIFT



FEEL

“Forty percent of diagnosed breast cancers are detected by women who feel a lump, so establishing a regular self breast examination is very important.” says Dr Cindy Mak, Director of Breast Services at Chris O'Brien Lifehouse

WARATAH W PARTNERSHIP



SBCF sponsors the NSW Waratah W with the Foundation's logo proudly displayed on the back of the training and playing shirts. We hope to reach and educate a younger group of women and men on the importance of being breast aware.

"Richard and I are thrilled to once again donate the sponsorship that allows Sydney Breast Cancer Foundations continued partnership with NSW Waratahs W and the fast-growing game of women's rugby."

Our vision is to raise greater awareness of breast cancer and encourage more women to get regular screenings. Breast Cancer is not a discriminator, it affects women of all ages, and through partnerships like these we endeavour to reach new communities who will benefit from this awareness plus encouraging the involvement of women in the game of rugby.

Be breast aware, know your body, early detection is vital. This message will save lives." - Foundation Chair, Lynne Crookes OAM



BURPEES4BOOBS

The Burpees4Boobs campaign aims to increase awareness of breast cancer by educating the community and encouraging women to be proactive in their health journey and how important exercise is as well as continuing to promote our message of the importance of early detection which is vital to increasing survival rates.

Why Burpees? Some people shudder when they hear the word. Some would run away as fast as they can. But they'd rather run away from cancer.



Our Campaign results from 2022 were amazing and reached a whole new audience about the importance of being breast cancer aware.

155,083

BURPEES
COMPLETED

213

FUNDRAISERS

843,176

SOCIAL REACH

6

MEDIA CHANNELS

637,000

MEDIA REACH

46,608

WEBSITE VIEWS

COMMUNICATION



In FY22/23 we set ourselves a communications objective to increase our reach and therefore increase our ability to spread our awareness message. Platforms such as Instagram, LinkedIn, Facebook and a dedicated CRM software allows us to consistently reach our extensive database who in turn help us spread our vital message while raising much needed funds.

Business objectives	Social media goals
Grow the brand	<u>Awareness</u> - who we are and what we support
Turn customers into advocates	<u>Engagement</u> - show how audiences are interacting with our content
Drive leads and donations	<u>Conversion</u> -to donate/get involved with online events/buy from the shop
Improve customer retention	<u>Consumer</u> - growth in ambassador relationships

Profile	Audience	Net Audience Growth	Published Posts	Impressions	Engagement
Reporting FY 22 - 23	4,558	1,396	880	397,377	17,658
Compare to FY 21 - 22	3,147	529	524	316,232	17,632
FY 22-23					
Facebook	1,651	246	261	113,711	8,384
LinkedIn	431	150	100	15,274	1,494
Instagram	2,476	1,000	519	268,392	7,780



HOW WE ACHIEVED ALL THIS



RUGBY LONG LUNCH

680 attendees gathered for our 18th Rugby Long Lunch, where Vince Sorrenti entertained and Jess Keen shared her inspiring breast cancer journey with our guests.



LADIES LUNCH

650 guests joined us at the Hyatt Regency to celebrate the return of the Ladies Lunch after a 2 year COVID hiatus. Jessica Rowe and Angela Bishop OAM kept the crowd entertained while Rachel Gilbert showcase the most beautiful clothes.



MOSMAN RUGBY

Mosman Rugby hosted its annual Ladies Day for the Foundation, and it was another great success. A wonderful fun, community event that helps us educate another group of women and men about the importance of being breast aware..



SCHOOL PROGRAM

You're never too young to be breast aware and understand your body's changes. Loreto Kirribilli successfully piloted the program, slated for rollout to other schools in 2024.



COMMUNITY

So many wonderful community groups came together to help us increase awareness and raise money for the Foundation with special mention to the brave team who went BALD AT THE BUENA.

WE COULDN'T DO IT WITHOUT YOU!

Thank you to our Sponsors, Donors and Partners for your ongoing support of the Sydney Breast Cancer Foundation.

PRINCIPAL SPONSOR

RICHARD CROOKES CONSTRUCTIONS

PRO BONO SUPPORTERS



MAJOR PINK SPONSORS



Audi Centre Mosman

PRIZE SPONSORS



MANILDRA GROUP
100% AUSTRALIAN OWNED



KEY CORPORATE SPONSOR



THE BOUJEE BOARDS



COMMUNITY PARTNER



WHAT WE HAVE ACHIEVED IN 29 YEARS

Sydney Breast Cancer Foundation has raised million of dollars of the past 29 years to support many varied and equally important programs. Some examples:



01

Funded the establishment and ongoing running costs of the Tumour Bank Research project

02

Funded the positions of two full time Breast Care Nurses for over 10 years

03

Funded research fellowships in, Medical Oncology and Pathology

04

Established a free Wig Library

05

Purchased a digital mammogram machine

06

Purchase of Spy Machine

06

Purchase of SOZO Machine to help detect Lymphoedema

07

Purchased a mobile Ultrasound Machine

08

Supplied and distributed over 350,000 Breast Check Shower cards internationally

09

Funded the production of "Communication & Breast Cancer" – a video for Surgeons and Doctors

10

Purchased a Bio impedance machine, which assists with the diagnosis and treatment of lymphoedema in breast cancer survivors

11

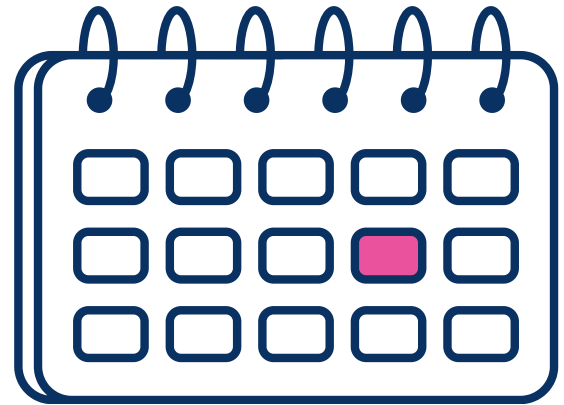
Funded the development of a course to secure a Diploma in Breast Care Nursing

12

Sponsorship of "Fear of Recurrence" paper



WHAT WE HAVE PLANNED FOR FY 23/24



BURPEES4BOOBS

The Month of February

ATC LADIES LUNCH

Saturday March 16th at the Rosehill Racecourse

MOSMAN RUGBY LADIES LUNCH

Saturday May 4th at Rawson Park Oval, Mosman

SBCF RUGBY LONG LUNCH

Friday May 10th at the Hyatt Regency Hotel

COMMUNITY EVENTS

Held in various locations throughout the year

SCHOOL PROGRAMS

Held in various schools throughout the year

SBCF LADIES LUNCH FY24/25

Friday 25th October at Royal Randwick Racecourse, Winx Room

Financial Report

Sydney Breast Cancer Foundation Limited

ABN 22 658 275 195

For the year ended 30 June 2023

Contents

3	Directors' Declaration
4	Statement of Profit or Loss and Other Comprehensive Income
6	Statement of Financial Position
7	Statement of Changes in Equity
8	Statement of Cash Flows
9	Notes to the Financial Statements
14	Fundraising Activities Declaration
15	Independent Auditor's Report
18	Auditor's Independence Declaration

Directors' Declaration

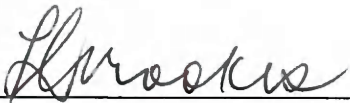
Sydney Breast Cancer Foundation Limited For the year ended 30 June 2023

The directors of the company declare that the company is not a reporting entity and that this special purpose financial report should be prepared in accordance with the accounting policies outlined in Note 1 of the financial statements.

In accordance with a resolution of the Board of Directors, the directors of the company declare that:

1. The financial statements and notes satisfy the requirements of the Australian Charities and Not-for-profits Commission Act 2012.
2. In the directors' opinion, there are reasonable grounds to believe that the company will be able to pay all of its debts, as and when they become due and payable.

Signed in accordance with subsection 60.15(2) of the Australian Charities and Not-for-profits Commission Regulations 2022.



Chairperson

Name: Lynne Crookes

Dated:

14/02/2024

The accompanying notes form part of these financial statements.

Statement of Profit or Loss and Other Comprehensive Income

Sydney Breast Cancer Foundation Limited
For the year ended 30 June 2023

	30 JUNE 2023 (\$)	30 JUNE 2022 (\$)
Income		
Donations	255,784	37,181
Fundraising	394,081	211,615
Sales	382,808	7,059
Sponsorship	115,000	70,000
Chris O'Brien Lifehouse Contribution	972,898	-
Total Income	2,120,570	325,854
Total	2,120,570	325,854
Expenses		
Wages and Salaries		
Superannuation	5,316	-
Wages and Salaries	50,631	-
Total Wages and Salaries	55,947	-
Direct Costs of Fundraising Appeals		
Advertising	585	-
Agency / Outsourced Services	38,325	-
AV & Production	30,628	-
Entertainment (Catering (Meals & Beverages))	6,108	-
Freight & Courier	1,820	-
Fundraising Expense	71,279	-
Marketing & PR	25,267	-
Merchandise	5,317	-
Postage & Couriers	898	-
Printing, Stationery & Design	5,608	-
Square Fees	5,571	-
Talent / Entertainment	9,500	-
Venue	36,632	-
Total Direct Costs of Fundraising Appeals	237,539	-
Other Expenses		
Annual Leave Provision	2,058	-
Bank Fees	89	-
Depreciation	264	-
Fees - Transaction (Stripe)	10,404	1,579
General Expenses	2,143	-
Insurance	3,309	-
Office Expenses - IT Hardware	3,750	-

The accompanying notes form part of these financial statements.

Statement of Profit or Loss and Other Comprehensive Income

	30 JUNE 2023 (\$)	30 JUNE 2022 (\$)
Subscriptions & Memberships	3,348	-
Telephone & Internet (IT Services & Telecomms)	204	-
Travel - Taxi, Car Hire & Parking	943	-
Chris O'Brien Lifehouse Expenses	525,501	-
Total Other Expenses	552,012	1,579
Total Expenses	845,497	1,579
Profit/(Loss) Before Gifts	1,275,073	324,276
Gifts Made		
Funding Commitment	113,022	-
Total Gifts Made	113,022	-
Net Profit / (Loss)	1,162,051	324,276
Other Comprehensive Income	-	-
Total Comprehensive Income / (Loss) for the Period	1,162,051	324,276

The accompanying notes form part of these financial statements.

Statement of Financial Position

Sydney Breast Cancer Foundation Limited

As at 30 June 2023

	30 JUNE 2023 (\$)	30 JUNE 2022 (\$)
Assets		
Current Assets		
Cash and Equivalents		
SBCF	827,063	252,801
Stripe AUD	348	1,591
Total Cash and Equivalents	827,411	254,392
Receivables		
Accounts Receivable	-	77,000
Total Receivables	-	77,000
Other Current Assets		
Prepayments	29,638	-
Total Other Current Assets	29,638	-
Total Current Assets	857,048	331,392
Non-Current Assets		
Property, plant and equipment		
Computer Equipment	1,358	-
Less Accumulated Depreciation on Computer Equipment	(264)	-
Total Property, plant and equipment	1,094	-
Term Deposits	750,000	-
Total Non-Current Assets	751,094	-
Total Assets	1,608,142	331,392
Liabilities		
Current Liabilities		
Accounts Payable	21,952	-
GST	2,817	7,116
PAYG Withholdings Payable	5,728	-
Provision for Annual Leave	2,058	-
Accrued Expenses	89,261	-
Total Current Liabilities	121,815	7,116
Total Liabilities	121,815	7,116
Net Assets	1,486,327	324,276
Equity		
Accumulated Profits	1,486,327	324,276
Total Equity	1,486,327	324,276

The accompanying notes form part of these financial statements.

Statement of Changes in Equity

Sydney Breast Cancer Foundation Limited
For the year ended 30 June 2023

	ACCUMULATED SURPLUS (\$)	CAPITAL RESERVE (\$)	TOTAL EQUITY
1. Equity			
<u>2022 Financial Year</u>			
Balance as at 30 June 2021	-	-	-
Net Profit for the Year	324,276	-	324,276
Transfer to General Reserve	-	-	-
Balance as at 30 June 2022	324,276	-	324,276
<u>2023 Financial Year</u>			
Balance as at 30 June 2022	324,276	-	324,276
Net Loss/Profit for the Year	1,162,051	-	1,162,051
Balance as at 30 June 2023	1,486,327	-	1,486,327

The accompanying notes form part of these financial statements.

Statement of Cash Flows

Sydney Breast Cancer Foundation Limited For the year ended 30 June 2023

	2023 (\$)	2022 (\$)
Cash flows from Operating Activities		
Receipts from customers	399,292	7,333
Payments to suppliers and employees	(50,219)	-
GST refunded/(paid)	(28,796)	-
Cash receipts from other operating activities	1,828,094	248,796
Cash payments for other operating activities	(794,356)	(1,737)
Total Cash flows from Operating Activities	1,354,015	254,392
Cash flows from Investing Activities		
Payment for property, plant and equipment	(1,358)	-
Other cash items from investing activities	(29,638)	-
Term Deposits	(750,000)	-
Total Cash flows from Investing Activities	(780,996)	-
Net increase/(decrease) in cash held	573,019	254,392
Cash Balances		
Opening cash balance	254,392	-
Closing cash balance	827,411	254,392
Movement in cash	573,019	254,392

The accompanying notes form part of these financial statements.

Notes to the Financial Statements

Sydney Breast Cancer Foundation Limited For the year ended 30 June 2023

1. Statement of Significant Accounting Policies

The company is a not-for-profit entity for financial reporting purposes under Australian Accounting Standards. The directors of company have prepared the financial statements on the basis that they satisfy the requirements of the Australian Charities and Not-for-profits Commission Act 2012 and that the company is a non-reporting entity because there are no users dependent on general purpose financial statements. The financial statements are therefore special purpose financial statements that have been prepared in order to meet the needs of the company and the Australian Charities and Not-for-profits Commission Act 2012.

On an overall basis, the financial statements comply with the recognition and measurement requirements in Australian Accounting Standards in relation to cash and cash equivalents, financial instruments, income (including other income) and related receivables and expenses and related payables.

The financial statements have been prepared in accordance with the significant accounting policies disclosed below, which the directors have determined are appropriate to meet the purpose of the company. Such accounting policies are consistent with the previous period unless stated otherwise.

All amounts included in the financial statements are denominated in Australian Dollars unless otherwise stated.

The financial statements have been prepared on an accruals basis and are based on historical costs unless otherwise stated in the notes.

The accounting policies that have been adopted in the preparation of these statements are set out in the paragraphs below.

2. Income Tax

The company is endorsed to access the exemption from income tax under Subdivision 50-B of the Income Tax Assessment Act 1997.

3. Cash and Cash Equivalents

Cash and cash equivalents include cash on hand, deposits held on call with banks, other short-term highly liquid investments with original maturities of three months or less.

4. Financial Instruments

Recognition, Initial Measurement and Derecognition

Financial assets and financial liabilities are recognised when the company becomes a party to the contractual provisions of the financial instrument, and are measured initially at fair value adjusted by transactions cost. Subsequent measurement of financial assets and financial liabilities are described below.

Financial assets are derecognised when the contractual rights to the cash flows from the financial asset expire, or when the financial asset and all substantial risk and reward are transferred. A financial liability is derecognised when it is extinguished, discharged, cancelled or expires.

The accompanying notes form part of these financial statements.

Classification and Subsequent Measurement of Financial Assets

Except for those trade receivables that do not contain a significant financing component and are measured at the transaction price in accordance with AASB 15, all financial assets are initially measured at fair value adjusted for transaction costs (where applicable).

Financial assets are subsequently measured at fair value through profit or loss (FVPL) with changes in carrying value being included under other income in Statement of Profit or Loss and Other Comprehensive Income.

Quoted bid prices in an active market are used to determine fair value whenever possible. In other circumstances such as for unlisted investments, valuation techniques are adopted as agreed by the directors, including recent arm's length transactions, reference to similar instruments, historical cost and option pricing models.

5. Related Party Transactions

There were no reportable transactions with related parties during the financial year.

6. Key Management Personnel Compensation

There was no compensation paid to Key Management Personnel during the financial year.

7. Revenue and Other Income

SBCF formally separated from the Chris O'Brien Lifehouse (COBLH) cancer hospital in April 2023 to become an independent charity. During our time embedded within COBLH, COBLH maintained within its financial records a set of SBCF-specific accounts. At separation, these were unwound. This unwinding is reflected in our financial statements, most obviously in our Statement of Profit and Loss. The Income entry, "Chris O'Brien Lifehouse Contribution", was the SBCF cash balance at COBLH at the time of separation, while "Chris O'Brien Lifehouse Expenses" represents the total expenses owed to COBLH. Post separation our support of COBLH continues, with COBLH now invoicing SBCF monthly and this is reflected under "Funding commitment".

Interest, rent, hire and donations revenue is recognised when it is received or credited to the company. Dividends, trust distributions and refundable franking credits revenue is recognised when the right to receive the consideration has been established.

SBCF's revenue in FY23 was higher than usual due to the COBLH separation. The Income entry in the Profit & Loss Statement, "Chris O'Brien Lifehouse Contribution", was the SBCF cash balance at COBLH at the time of separation. This represents SBCF's reserves, built up over many years. SBCF aims to keep three years' worth of funding commitments in reserves in the event of unplanned impacts to its ability to raise funds, or to free it to meet special, one-off requests, e.g. for the purchase of hospital machinery in support of SBCF's purpose.

8. Expenses

Distributions or gifts to eligible recipients are recognised as an expense to the company when they are paid.

9. Funding Commitment

The company, in response to a request from Chris O'Brien Lifehouse, has entered into the following annual funding commitment. This directly funds a breast cancer Research Fellow, breast care nurse and a variety of oncology and lymphoedema related therapies and services for Lifehouse breast cancer patients.

Recipient organisation	Funding commitment
Chris O'Brien Lifehouse	\$331,252

The accompanying notes form part of these financial statements.

10. Critical Accounting Estimates and Judgements

The directors evaluate estimates and judgements incorporated into the financial statements based on historical knowledge and best available current information. Estimates assume a reasonable expectation of future events and are based on current trends and economic data, obtained both externally and within the company.

11. Members' Liability

Members' Liability as at 30 June 2023.

Member	Amount of liability
Lynne Crookes	\$1.00
Catherine West	\$1.00
Deborah West	\$1.00
Rena Lopez-Buckley	\$1.00
Total Liability	\$4.00

12. Events After the Reporting Date

The directors are not aware of any significant events since the end of the reporting period.

13. Company Details

The principal place of business is:

Level 3, 4 Broadcast Way
Artarmon NSW 2064

The company is a not for profit entity and has been established for charitable purposes only.

14. Principal Activities

The purpose of the company is to promote the detection, management, and cure of breast cancer, and improve the quality of life and survival rates of breast cancer patients.

The accompanying notes form part of these financial statements.

15. Fundraising Appeals Conducted During the Financial Year

Fundraising appeals conducted during the financial year included the receiving of directly and indirectly solicited donations.

	2023 \$	2022 \$
Fundraising Appeals		
(i) Results of fundraising appeals		
Gross proceeds from fundraising:	394,081	211,615
Donations received	255,784	37,181
Less: direct costs of fundraising appeals	(237,539)	-
Total	412,326	248,796
(ii) Application of net surplus obtained from fundraising appeals		
Gifts paid to Chris O'Brien Lifehouse	113,022	-
Administration expenses	72,054	1,579
Chris O'Brien Lifehouse Expenses ¹	525,501	-
Total	710,577	1,579

The accompanying notes form part of these financial statements.

- This item is an aggregation of funds owed to COBLH at separation. It includes: 1) \$10,000 given to COBHL to fund a "Fear of Recurrence" research paper aimed at promoting clinical intervention to reduce fear of recurrence in breast cancer patients; 2. Funding the purchase of a SOZO Machine to help detect Lymphoedema; 3. Funding for a Surgical Fellow, Breast Care nurse and oncology and lymphoedema therapies; and 4. A sponsorship of the NSW Waratahs for SBCF to sponsor the Women's Waratahs rugby team in return for opportunities to collaborate with the Waratahs to raise breast cancer awareness. The remaining balance is a combination of direct costs of fundraising appeals and administration expenses incurred from FY19 up to the time of separation.*

Notes to the Financial Statements

Sydney Breast Cancer Foundation Limited For the year ended 30 June 2023

	(\$)	%	(\$)	%
<u>(iii) Comparison of certain monetary figures and percentages</u>				
Total cost of fundraising/	237,539	-	-	-
Gross income from donations	649,865	36.55%	248,796	-
Net surplus from donations/	412,326	-	248,796	-
Gross income from donations	649,865	63.45%	248,796	100.00%
Total gifts paid/	113,022	-	-	-
Total expenditure	845,497	13.37%	1,579	-
Total gifts paid/	113,022	-	-	-
Total income received from operating activities ¹	2,120,570	5.3%	325,854	-

The accompanying notes form part of these financial statements.

1. *SBCF's revenue in FY23 was higher than usual due to the COBLH separation. The Income entry in the Profit & Loss Statement, "Chris O'Brien Lifehouse Contribution", was the SBCF cash balance at COBLH at the time of separation. This represents SBCF's reserves, built up over many years. SBCF aims to keep three years' worth of funding commitments in reserves in the event of unplanned impacts to its ability to raise funds, or to free it to meet special, one-off requests, e.g. for the purchase of hospital machinery in support of SBCF's purpose.*

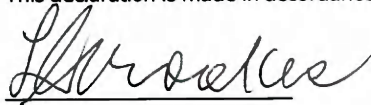
Fundraising Activities Declaration

Sydney Breast Cancer Foundation Limited
For the year ended 30 June 2023

The directors of the trustee company of Sydney Breast Cancer Foundation Limited declare that in their opinion:

- a) the financial report gives a true and fair view of all income and expenditure of the Trust with respect to fundraising appeal activities for the financial year ended 30 June 2023;
- b) the statement of financial position gives a true and fair view of the state of affairs of the Trust with respect to fundraising appeal activities as at 30 June 2023;
- c) the provisions of the Charitable Fundraising (NSW) Act 1991 and Regulations under that Act and the conditions attached to the authority have been complied with during the year ended 30 June 2023; and
- d) the internal controls exercised by the Trust are appropriate and effective in accounting for all income received and applied by the Trust from any of its fundraising appeals.

This declaration is made in accordance with a resolution of the Board of Directors of the trustee company.



Chairperson: Lynne Crookes

Dated: 14/02/2024

The accompanying notes form part of these financial statements.

**INDEPENDENT AUDITOR'S REPORT
TO THE MEMBERS OF
SYDNEY BREAST CANCER FOUNDATION LIMITED**

Assura Group Pty Ltd
ABN : 30 114 712 462
Bldg B, Suite 211, Lvl 2
Sky City Bldg, 20 Lexington Drive
Bella Vista NSW 2153

Report on the Audit of the Financial Report

t 1300 55 33 38

www.assuragroup.com.au

Auditor's Opinion

We have audited the accompanying financial report, being a special purpose financial report of Sydney Breast Cancer Foundation Limited, which comprises the statement of financial position as at 30 June 2023, the statement of profit or loss and other comprehensive income, the statement of changes in equity and the statement of cash flows for the year then ended, and notes to the financial statements, including a summary of significant accounting policies, and directors' declaration.

In our opinion, the financial report presents fairly, in all material respects, the financial position of Sydney Breast Cancer Foundation Limited as at 30 June 2023 and its financial performance for the year then ended in accordance with the accounting policies as described in Note 1 to the financial statements, including satisfying the requirements of subdivision 60-C (Annual financial reports) of the Australian Charities and Not-for-Profits Commission Act 2012.

Basis for Opinion

We conducted our audit in accordance with Australian Auditing Standards. Our responsibilities under those standards are further described as in the Auditor's Responsibilities for the Audit of the Financial Report section of our report. We are independent of Sydney Breast Cancer Foundation Limited in accordance with the auditor independence requirements and of the ethical requirements of the Accounting Professional and Ethical Standards Board's APES 110 Code of Ethics for Professional Accountants (the code) that are relevant to our audit of the financial report in Australia. We have also fulfilled our other ethical responsibilities in accordance with the Code.

We believe that the audit evidence we have obtained is sufficient and appropriate to provide a basis for our opinion.

Emphasis of Matter – Basis of Accounting

We draw attention to Note 1 of the financial report, which describes the basis of accounting. The financial report has been prepared for the purpose of fulfilling the directors'/trustee's financial reporting responsibilities under the requirements of subdivision 60-C (Annual financial reports) of the Australian Charities and Not-for-profits Commission Act 2012. As a result, the financial report may not be suitable for another purpose. Our opinion is not modified in respect of this matter.

**INDEPENDENT AUDITOR'S REPORT (cont'd)
TO THE MEMBERS OF
SYDNEY BREAST CANCER FOUNDATION LIMITED**

Responsibilities of the Directors for the Financial Report

The directors of the company are responsible for the preparation of the financial report that gives a true and fair view in accordance with Australian Accounting Standards and the *Australian Charities and Not-for-profits Commission Act 2012* and for such internal control as the directors determine is necessary to enable the preparation of the financial report that gives a true and fair view and is free from material misstatement, whether due to fraud or error.

In preparing the financial report, the directors are responsible for assessing Sydney Breast Cancer Foundation Limited's ability to continue as a going concern, disclosing, as applicable, matters related to going concern and using the going concern basis of accounting unless the directors either intend to liquidate the company or to cease operations, or have no realistic alternative but to do so. The directors are responsible for overseeing Sydney Breast Cancer Foundation Limited's financial reporting process.

Auditor's Responsibilities for the Audit of the Financial Report

Our objectives are to obtain reasonable assurance about whether the financial report as a whole is free from material misstatement, whether due to fraud or error, and to issue an auditor's report that includes our opinion. Reasonable assurance is a high level of assurance, but is not a guarantee that an audit conducted in accordance with the Australian Auditing Standards will always detect a material misstatement when it exists. Misstatements can arise from fraud or error and are considered material if, individually or in the aggregate, they could reasonably be expected to influence the economic decisions of users taken on the basis of this financial report.

As part of an audit in accordance with the Australian Auditing Standards, we exercise professional judgement and maintain professional scepticism throughout the audit. We also:

- Identify and assess the risks of material misstatement of the financial report, whether due to fraud or error, design and perform audit procedures responsive to those risks, and obtain audit evidence that is sufficient and appropriate to provide a basis for our opinion. The risk of not detecting a material misstatement resulting from fraud is higher than for one resulting from error, as fraud may involve collusion, forgery, intentional omissions, misrepresentations, or the override of internal control.
- Obtain an understanding of internal control relevant to the audit in order to design audit procedures that are appropriate in the circumstances, but not for the purpose of expressing an opinion on the effectiveness of the Sydney Breast Cancer Foundation Limited's internal control.
- Evaluate the appropriateness of accounting policies used and the reasonableness of accounting estimates and related disclosures made by the directors.

**INDEPENDENT AUDITOR'S REPORT (cont'd)
TO THE MEMBERS OF
SYDNEY BREAST CANCER FOUNDATION LIMITED**

Auditor's Responsibilities for the Audit of the Financial Report (cont'd)

- Conclude on the appropriateness of the director's use of the going concern basis of accounting and, based on the audit evidence obtained, whether a material uncertainty exists related to events or conditions that may cast significant doubt on Sydney Breast Cancer Foundation Limited's ability to continue as a going concern. If we conclude that a material uncertainty exists, we are required to draw attention in our auditor's report to the related disclosures in the financial report, if such disclosures are inadequate, to modify our opinion. Our conclusions are based on the audit evidence obtained up to the date of our auditor's report. However, future events or conditions may cause the Entity to cease to continue as a going concern.
- Evaluate the overall presentation, structure and content of the financial report, including the disclosures, and whether the financial report represents the underlying transactions and events in a manner that achieves fair presentation.

We communicate with the directors regarding, among other matters, the planned scope and timing of the audit and significant audit findings, including any significant deficiencies in internal controls that we identify during our audit.

We also provide the management with a statement that we have complied with relevant ethical requirements regarding independence, and to communicate with them all relationships and other matters that may reasonably be thought to bear on our independence, and where applicable, related safeguards.

From the matters communicated with the management, we determine those matters that were of most significance in the audit of the financial report of the current period and are therefore the key audit matters. We describe these matters in our auditor's report unless law or regulation precludes public disclosure about the matter or when, in extremely rare circumstances, we determine that a matter should not be communicated in our report because the adverse consequences of doing so would reasonably be expected to outweigh the public interest benefits of such communication.

**Assura Group Pty Ltd
Chartered Accountants**



**Graham Judkowski
Director**

Date: 14 February 2024

AUDITORS' INDEPENDENCE DECLARATION

In accordance with the requirements of section 60-40 of the Australian Charities and Not-for-profits Commission Act 2012, as auditor of Sydney Breast Cancer Foundation Limited for the year ended 30 June 2023, I declare that, to the best of my knowledge and belief, there have been

- No contraventions of the auditor independence requirements of the Australian Charities and Not-for-profits Commission Act 2012 and in relation to the audit; and
- No contraventions of any applicable code of professional conduct in relation to the audit.

Assura Group Pty Ltd
Chartered Accountants



Graham Judkowski
Director

Date: 14 February 2024